

ENGINEERED PRODUCTS: IGP MANUAL SERIES

FEATURES

- Non-overloading design
- Externally-mounted start components*
- Carbon/Ceramic mechanical seals
- Deflection-resistant, short motor shaft
- Corrosion-resistant brass impeller minimizes downtime and maintenance
- Seven-vane, angled face, non-clogging, balanced impeller
- Tight cutting clearances for superior grinding at 414,000 cuts per minute
- Epoxy-coated finish for corrosion resistance and durability
- Built-in overload protection prevents over-current and over-temperature damage

**The IGP Series requires a specific control panel or capacitor kit from FPS, matched to the pump for proper operation and third-party approval.*

CONSTRUCTION

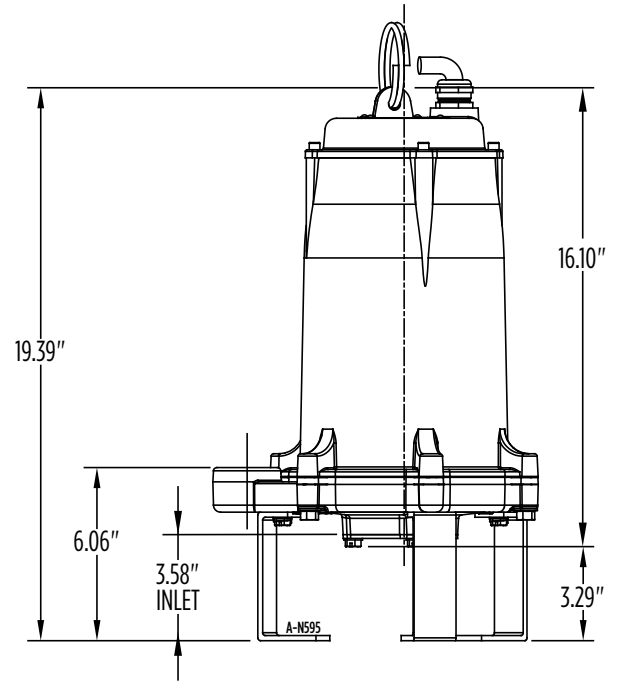
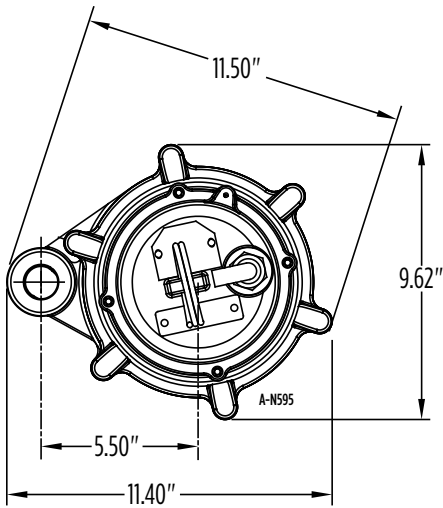
Motor Cover	Cast iron with epoxy coating
Motor Cover O-ring	Nitrile
Motor Design	Single-phase, capacitor start, capacitor run
Insulation Class	F
Overload Protection	Internal, on winding thermal protector
Motor Shaft	AISI 300 series stainless steel
Ball Bearing-Upper	Single row ball, 6203
Ball Bearing-Lower	Single row ball, 6306
Seal Housing	Cast iron with epoxy coating
Mechanical Seal	Carbon/ceramic
Volute	Cast iron with epoxy coating
Impeller	Brass
Rotating Cutter	2 blade design, AISI 440C stainless steel, through-hardened to Rockwell 55-60C
Stationary Cutter	AISI 440C stainless steel, hardened to Rockwell 55-60C
External Hardware	300 series stainless steel
Power Cable	Type SOW-A or SOW 14/4 AWG



(U.S. Patent No. 7,237,736)

ENGINEERED PRODUCTS: IGP MANUAL SERIES

DIMENSIONS



Shown with optional leg kit (599078)

MODEL INFORMATION

Item No.	Model	HP	Volts	Hz	Full Load Amps/ Watts			
515855	IGP-M201-15	2	208	60	13.9/3200			
515865	IGP-M231-15-H130	2	230	60	13.9/3200			
Performance (GPM @ Head)								
						Shut-Off	PSI	Weight (lbs)
20'	40'	60'	80'	100'	120'	130'	56	75
32	31	30	25	20	10	130'	56	75

