

Hub City DuraLine™ Bearing Units



DuraLine™ Features	N-2
Load Ratings	N-3
Pillow Blocks	N-4 to N-10
Flange Blocks.	N-11 to N-16
Flange Cartridge Bearings	N-17
Flange Bracket Bearings	N-17
Take Up Units.	N-18
200 Series Bearing Inserts	N-23
Medium Duty Bearings	N-25
Competitor Product Interchange	N-28

Over 325 NEW items in this section!

Hub City DuraLine™ Bearing Units

Features

- Reliable Performance
- Economical Durability
- Bore Sizes Up to 3-1/2"
- Cast Iron Pillow Blocks
- Cast Iron and Ductile Iron Flange Blocks
- Cast Iron Flange Brackets
- Normal Duty and Medium Duty Sizes
- Take Up Units
- Setscrew Lock and Eccentric Lock Inserts
- Wide and Narrow Inner Race Inserts
- Self-Aligning Replacement Bearings
- Pre-Lubricated with Lithium Grease
- Steel Retainers
- Anti-rotation Pins
- Nitrile Rubber Seals with Steel Trash Guards
- Precision Bored Housings



**For Additional
Mounted Bearings**

See IndustrialLine™

Section M

Hub City DuraLine™ Bearing Units

Load Ratings

DuraLine™ Bearings

N

BEARING RADIAL LOAD CAPACITY (POUNDS) FOR 500 HOURS L-10 LIFE (2500 HOURS AVERAGE LIFE) AND STEADY LOAD CONDITIONS											
SHAFT SIZE (INCHES)		BASIC DYNAMIC RATING, C* (POUNDS)	BASIC STATIC RATING, Co** (POUNDS)	BEARING SPEED (RPM)							
100, 200 SERIES	300 SERIES			100	500	1,000	1,500	2,000	2,500	3,000	3,500
1/2 to 5/8 3/4 7/8 to 1				2150 2880 3150	1070 1490 1770	1,490 2,000 2,180	870 1,170 1,280	690 930 1,010	600 810 890	550 740 800	510 680 750
1-1/8 to 1-1/4S 1-1/4 to 1-7/16	1	4380 5780	2520 3420	3,040 4,010	1,780 2,340	1410 1860	1230 1620	1120 1480	1040 1370	980 1290	930
1-1/2	1-7/16	6650	4090	4,610	2,700	2140	1870	1700	1580	1480	
1-5/8 to 1-3/4	1-1/2	7160	4680	4,960	2,900	2300	2010	1830	1700		
1-7/8 to 2S	1-5/8 to 1-3/4	7890	5220	5,470	3,200	2540	2220	2020	1870		
2 to 2-3/16	1-15/16 to 2	9790	6560	6,790	3,970	3150	2750	2500			
2-1/4 to 2-7/16	2-3/16	10750	7370	7,450	4,360	3460	3020	2750			
	2-7/16 to 2-1/2	13670	10120	9,480	5,540	4400	3840				
2-15/16	2-11/16	14840	11130	10,290	6,020	4780	4170				
	2-15/16 to 3	16070	12180	11,140	6,520	5170	4520				
	3-7/16 to 3-1/2	21560	16070	14,950	8,740	6940	6060				

TO MODIFY THE ABOVE RATINGS FOR OTHER L-10 LIFE REQUIREMENTS OR FOR SHOCK LOADS MULTIPLY THE ABOVE RATINGS BY THE FACTOR FROM THIS CHART														
MODIFICATION FACTORS FOR L-10 SERVICE LIFE AND LOAD CONDITIONS:														
LOAD CONDITIONS	L-10 LIFE (HOURS)													
	500	700	1,000	1,500	2,000	3,000	4,000	5,000	7,000	10,000	15,000	20,000	30,000	50,000
Steady Load	1.00	.894	.794	.694	.630	.550	.500	.464	.415	.368	.322	.292	.255	.215
Light Shock	.90	.804	.715	.624	.567	.495	.450	.418	.373	.331	.290	.263	.230	.194
Moderate Shock	.70	.626	.556	.485	.441	.385	.350	.325	.290	.258	.225	.205	.179	.151

* Radial load for an L-10 rating life of 1,000,000 revolutions.
 ** Radial load rating for stationary or very low speed operation.

Maximum Recommended Speeds:		
100, 200 Series	300 Series	
1/2 to 1-1/4S	1	3,500 RPM
1-1/4 to 1-1/2	1-3/16 to 1-7/16	3,000 RPM
1-5/8 to 2S	1-1/2 to 1-3/4	2,500 RPM
2 to 2-7/16	1-15/16 to 2-1/4	2,000 RPM
	2-7/16 to 2-11/16	1,700 RPM
	2-15/16 to 3-1/2	1,500 RPM

For ultimate life, snug fit or light press fit on shaft should be used.
 Recommended operating temperature range: -25 to +225 deg F.
 For applications not covered in the rating tables, consult the factory.
 Ratings are based on ISO 281.
 Ratings are based on snug or light press fit on shaft. Multiply ratings by 0.8 for loose shaft fits.

FOR LUBRICATION AND MOUNTING INSTRUCTIONS REFER TO SECTION S.

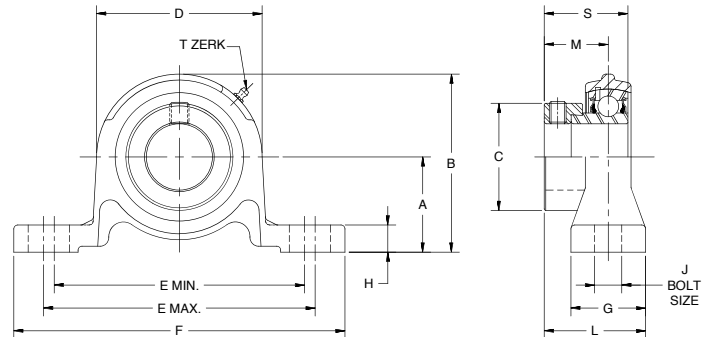
Hub City DuraLine™ Bearing Units

Ductile Iron Pillow Blocks

Series PB120UR

Features

- Relube type. Prelubricated at factory
- Eccentric locking collar
- Self-aligning replaceable bearing
- Nitrile rubber seals with steel trash guard
- Precision bored high strength Ductile Iron housing



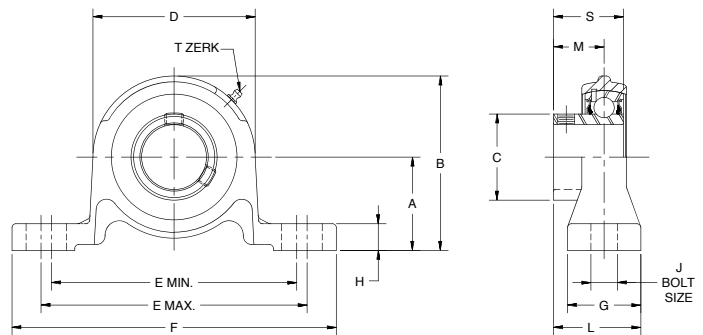
SHAFT SIZE	DIMENSIONS													WT. LBS.
	A	B	C	D	E		F	G	H	J	L	M	S	
					MIN.	MAX.								
1/2, 5/8	1.187	2.160	1.102	2.130	3.220	3.630	4.500	0.980	0.280	0.430	1.360	0.889	1.126	0.6
3/4	1.312	2.440	1.299	2.400	3.590	4.030	4.920	1.060	0.310	0.430	1.460	0.945	1.220	0.8
7/8, 1	1.437	2.720	1.476	2.560	3.750	4.120	5.120	1.140	0.350	0.410	1.500	0.925	1.220	1.0
1-1/8, 1-3/16, 1-1/4s	1.687	3.190	1.732	3.000	4.470	4.970	6.140	1.300	0.390	0.550	1.700	1.091	1.406	1.4
1-1/4, 1-3/8, 1-7/16	1.875	3.580	2.165	3.430	4.750	5.250	6.500	1.380	0.390	0.550	1.850	1.197	1.531	1.9

Part Numbers are specified by "PB120" and Bore Size; Example: PB120UR x 1-1/8.
 For Load Ratings, see page N-3.
 For replacement inserts use B220R Bearing Inserts, see page N-22.
 T-Zerk: 1/4-28 Taper

Series PB150UR

Features

- Relube type. Prelubricated at factory
- Setscrew locking
- Self-aligning replaceable bearing
- Nitrile rubber seals with steel trash guard
- Precision bored high strength Ductile Iron housing



SHAFT SIZE	DIMENSIONS													WT. LBS.
	A	B	C	D	E		F	G	H	J	L	M	S	
					MIN.	MAX.								
1/2, 5/8	1.187	2.160	0.921	1.940	3.220	3.630	4.500	0.980	0.280	0.430	1.100	0.629	0.866	0.6
3/4	1.312	2.440	1.142	2.400	3.590	4.030	4.920	1.060	0.310	0.430	1.224	0.709	0.984	0.8
7/8, 1	1.437	2.720	1.339	2.560	3.750	4.120	5.120	1.140	0.350	0.410	1.343	0.768	1.063	1.0
1-1/8, 1-3/16, 1-1/4s	1.687	3.160	1.587	3.000	4.470	4.970	6.140	1.300	0.390	0.550	1.475	0.866	1.181	1.4
1-1/4, 1-3/8, 1-7/16	1.875	3.560	1.889	3.430	4.750	5.250	6.500	1.380	0.390	0.550	1.578	0.925	1.259	1.9

Part Numbers are specified by "PB150" and Bore Size; Example: PB150UR x 1-1/8.
 For Load Ratings, see page N-3.
 For replacement inserts use B250R Bearing Inserts, see page N-22.
 T-Zerk: 1/4-28 Taper

DIMENSIONS SHOWN ARE FOR REFERENCE ONLY.

DOWNLOAD AVAILABLE CAD MODELS AT: WWW.HUBCITYINC.COM

Certified prints are available upon request

CALL: (605) 225-0360 • FAX: (605) 225-0567

Hub City DuraLine™ Bearing Units Pillow Blocks

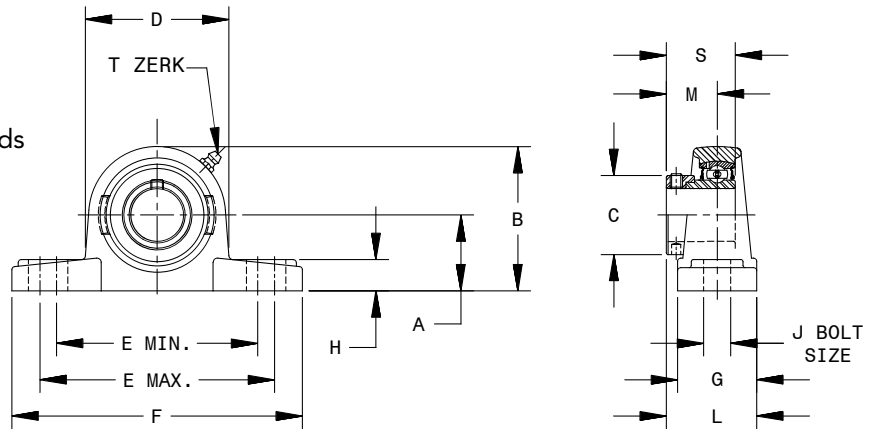
Series PB220UR, PB221UR

Features

- Self-aligning replaceable bearing
- Pre-lubricated with lithium grease
- Steel retainers
- Anti-rotation pins
- Nitrile rubber seals with steel trash guards
- Precision bored housings



200 SERIES 2 BOLT PILLOW BLOCK – ECCENTRIC LOCK



20 SERIES – 2 BOLT PILLOW BLOCKS – CAST IRON – ECCENTRIC LOCK – RELUBE TYPE

PB220UR (FOR LOW SHAFT HEIGHTS)

SHAFT SIZE	A	B	C	D	E MIN.	E MAX.	F	G	H	J	L	M	S	WT. LBS.
1/2, 5/8	1.063	2.130	1.102	2.240	3.310	3.700	4.760	1.380	0.520	0.470	1.640	0.890	1.126	1.1
3/4	1.252	2.520	1.299	2.640	3.660	4.060	5.240	1.610	0.560	0.470	1.690	0.945	1.220	1.8
7/8, 1	1.311	2.690	1.476	2.800	3.940	4.330	5.510	1.770	0.630	0.470	1.670	0.925	1.220	2.3
1-1/8, 1-3/16, 1-1/4s	1.563	3.150	1.732	3.270	4.610	4.920	6.300	1.880	0.670	0.590	2.040	1.091	1.406	2.8
1-1/4, 1-3/8, 1-7/16	1.811	3.620	2.165	3.860	4.840	5.160	6.570	1.880	0.750	0.590	2.140	1.197	1.532	3.7
1-1/2	1.938	3.940	2.283	4.170	5.350	5.670	7.130	2.130	0.750	0.590	2.430	1.366	1.720	4.2
1-5/8, 1-11/16, 1-3/4	2.063	4.190	2.480	4.530	5.590	5.910	7.480	2.130	0.830	0.590	2.410	1.346	1.720	4.8
1-7/8, 1-15/16, 2S	2.189	4.450	2.716	4.800	6.020	6.500	8.000	2.250	0.870	0.780	2.510	1.326	1.720	5.9
2, 2-3/16	2.437	4.920	2.992	5.310	6.890	7.360	9.130	2.360	0.980	0.780	2.670	1.492	1.906	8.3
2-1/4, 2-7/16	2.688	5.440	3.311	5.830	7.240	7.720	9.500	2.530	1.140	0.780	2.880	1.504	1.937	10.9

PB221UR (FOR HIGH SHAFT HEIGHTS)

SHAFT SIZE	A	B	C	D	E MIN.	E MAX.	F	G	H	J	L	M	S	WT. LBS.
1/2, 5/8	1.188	2.440	1.102	2.360	3.440	4.060	5.000	1.500	0.560	0.530	1.640	0.890	1.126	1.2
3/4	1.311	2.560	1.299	2.560	3.440	4.060	5.000	1.500	0.560	0.530	1.690	0.945	1.220	1.9
7/8, 1	1.437	2.800	1.476	2.870	3.810	4.440	5.510	1.500	0.590	0.530	1.670	0.925	1.220	2.4
1-1/8, 1-3/16, 1-1/4s	1.688	3.270	1.732	3.390	4.530	5.000	6.500	1.880	0.670	0.670	2.040	1.091	1.406	2.9
1-1/4, 1-3/8, 1-7/16	1.875	3.660	2.165	3.740	4.750	5.250	6.570	1.880	0.720	0.670	2.140	1.197	1.532	4.1
1-1/2	1.938	3.900	2.283	4.130	5.160	5.630	7.250	2.130	0.720	0.670	2.430	1.366	1.720	4.3
1-5/8, 1-11/16, 1-3/4	2.125	4.190	2.480	4.410	5.500	6.000	7.500	2.130	0.780	0.670	2.410	1.346	1.720	4.9
1-7/8, 1-15/16, 2S	2.250	4.500	2.716	4.690	6.000	6.530	8.120	2.360	0.810	0.780	2.510	1.326	1.720	6.1
2, 2-3/16	2.500	4.960	2.992	5.080	6.440	7.000	8.620	2.360	0.910	0.780	2.670	1.492	1.906	9.0
2-1/4, 2-7/16	2.750	5.440	3.311	5.670	6.970	7.500	9.500	2.750	0.980	0.780	2.880	1.504	1.937	11.1

For Load Ratings, See Page N-3

T-Zerk: 1/4-28 Taper

For Replacement Inserts, Use B220R

To order, specify type and bore size. Example: PB220UR x 1-7/16

DIMENSIONS SHOWN ARE FOR REFERENCE ONLY.

DOWNLOAD AVAILABLE CAD MODELS AT: WWW.HUBCITYINC.COM

Certified prints are available upon request

EMAIL: hubsales@regalbeloit.com • www.hubcityinc.com



Hub City DuraLine™ Bearing Units

Pillow Blocks - Wide Inner Race

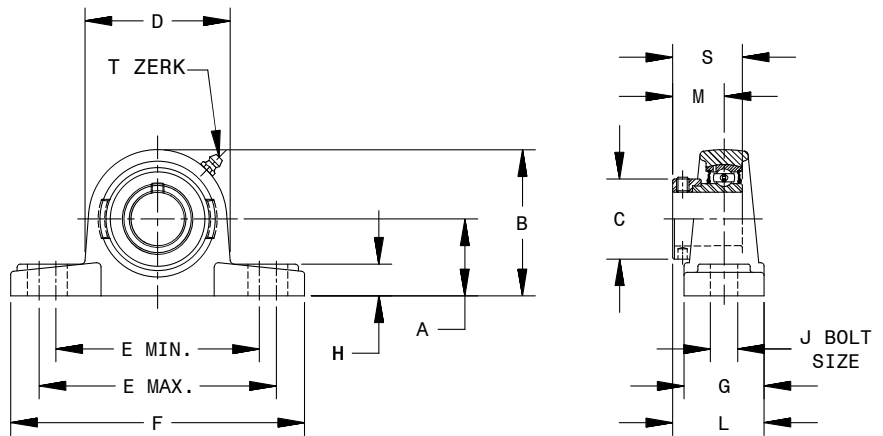
Series PB220DRW, PB221DRW

Features

- Ductile iron housings
- Higher strength and impact resistance for high shock loads
- Suitable to replace gray iron housed bearings
- Self-aligning replaceable bearing
- Pre-lubricated with lithium grease
- Steel retainers
- Anti-rotation pins
- Nitrile rubber seals with steel flingers
- Precision bored housings



200 SERIES 2 BOLT PILLOW BLOCK ECCENTRIC LOCK – WIDE INNER RING



20 SERIES - 2 BOLT PILLOW BLOCKS - DUCTILE IRON - ECCENTRIC LOCK - RELUBE TYPE - WIDE INNER RING

PB220DRW (FOR LOW SHAFT HEIGHTS)

SHAFT SIZE	A	B	C	D	E MIN.	E MAX.	F	G	H	J	L	M	S	WT. LBS.
3/4	1.250	2.520	1.299	2.640	3.680	4.030	5.250	1.610	0.560	0.472	1.850	1.049	1.720	1.9
7/8, 1	1.312	2.680	1.476	2.800	3.960	4.310	5.500	1.770	0.630	0.472	1.950	1.061	1.748	2.4
1-1/8, 1-3/16, 1-1/4s	1.562	3.150	1.732	3.270	4.600	4.930	6.310	1.890	0.670	0.590	2.130	1.187	1.906	3.0
1-1/4, 1-3/8, 1-7/16	1.812	3.620	2.165	3.860	4.830	5.170	6.560	1.890	0.750	0.590	2.220	1.274	2.016	3.9
1-1/2	1.937	3.860	2.283	4.170	5.350	5.680	7.103	2.130	0.750	0.590	2.440	1.376	2.220	4.5
1-5/8, 1-11/16, 1-3/4	2.062	4.170	2.480	4.530	5.580	5.920	7.500	2.130	0.830	0.590	2.440	1.376	2.220	5.1
1-7/8, 1-15/16, 2s	2.187	4.490	2.717	4.800	6.020	6.500	8.000	2.240	0.870	0.787	2.620	1.500	2.469	6.4
2, 2-3/16	2.437	4.960	2.992	5.310	6.890	7.300	9.130	2.360	0.980	0.787	2.900	1.717	2.811	8.8
2-1/4, 2-7/16	2.687	5.430	3.311	5.830	7.240	7.720	9.500	2.520	1.140	0.787	3.100	1.844	3.063	11.4

PB221DRW (FOR HIGH SHAFT HEIGHTS)

SHAFT SIZE	A	B	C	D	E MIN.	E MAX.	F	G	H	J	L	M	S	WT. LBS.
3/4	1.312	2.560	1.299	2.640	3.500	4.090	5.000	1.500	0.550	0.512	1.800	1.049	1.720	2.0
7/8, 1	1.437	2.800	1.476	2.800	3.900	4.370	5.500	1.500	0.590	0.512	1.810	1.061	1.748	2.5
1-1/8, 1-3/16, 1-1/4s	1.687	3.270	1.732	3.270	4.560	4.970	6.500	1.890	0.670	0.670	2.130	1.187	1.906	3.1
1-1/4, 1-3/8, 1-7/16	1.875	3.660	2.165	3.860	4.790	5.210	6.560	1.890	0.710	0.670	2.220	1.274	2.016	4.3
1-1/2	1.937	3.860	2.283	4.170	5.190	5.600	7.250	2.130	0.710	0.670	2.250	1.376	2.220	4.6
1-5/8, 1-11/16, 1-3/4	2.125	4.170	2.480	4.530	5.540	5.960	7.500	2.130	0.790	0.670	2.440	1.376	2.220	5.2
1-7/8, 1-15/16, 2s	2.250	4.490	2.717	4.800	6.040	6.520	8.120	2.360	0.830	0.787	2.460	1.500	2.469	6.6
2, 2-3/16	2.500	4.960	2.992	5.310	6.480	7.010	8.620	2.360	0.910	0.787	2.500	1.717	2.811	9.5
2-1/4, 2-7/16	2.750	5.430	3.311	5.830	6.990	7.500	9.500	2.750	0.980	0.787	2.940	1.844	3.063	11.5

For Load Ratings, See Page N-3

T-Zerk: 1/4-28 Taper

For Replacement Inserts, Use B220RW

Dimensions shown are for reference only.

To order, specify type and bore size. Example: PB220DRW x 1-7/16

DOWNLOAD AVAILABLE CAD MODELS AT: WWW.HUBCITYINC.COM

Certified prints are available upon request

CALL: (605) 225-0360 • FAX: (605) 225-0567

Hub City DuraLine™ Bearing Units Pillow Blocks

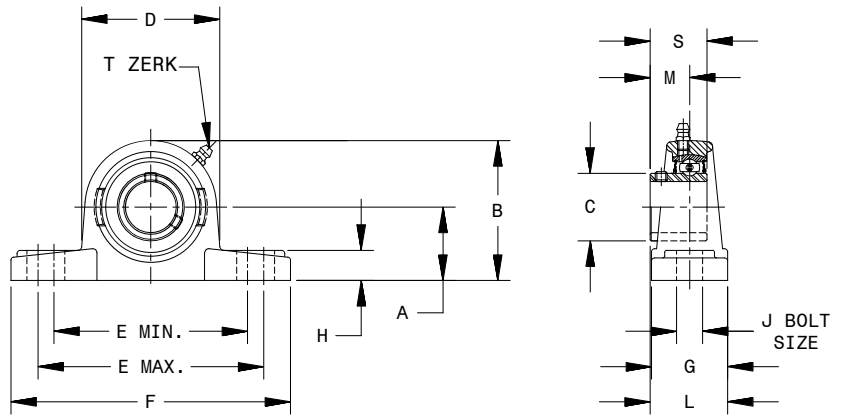
Series PB250UR, PB251UR

Features

- Self-aligning replaceable bearing
- Pre-lubricated with lithium grease
- Steel retainers
- Anti-rotation pins
- Nitrile rubber seals with steel trash guards
- Precision bored housings



200 SERIES 2 BOLT PILLOW BLOCK – SETSCREW LOCK



20 SERIES – 2 BOLT PILLOW BLOCKS – CAST IRON – SETSCREW LOCK – RELUBE TYPE

PB250UR (FOR LOW SHAFT HEIGHTS)

SHAFT SIZE	A	B	C	D	E MIN.	E MAX.	F	G	H	J	L	M	S	WT. LBS.
1/2, 5/8	1.063	2.130	0.921	2.240	3.310	3.700	4.760	1.380	0.520	0.470	1.320	0.630	0.867	1.2
3/4	1.252	2.520	1.141	2.640	3.660	4.060	5.240	1.610	0.560	0.470	1.520	0.710	0.984	1.8
7/8, 1	1.311	2.690	1.339	2.800	3.940	4.330	5.510	1.770	0.630	0.470	1.650	0.768	1.063	2.3
1-1/8, 1-3/16, 1-1/4s	1.563	3.150	1.587	3.270	4.610	4.920	6.300	1.880	0.670	0.590	1.810	0.866	1.181	2.8
1-1/4, 1-3/8, 1-7/16	1.811	3.620	1.890	3.860	4.840	5.160	6.570	1.880	0.750	0.590	1.870	0.925	1.260	3.6
1-1/2	1.938	3.940	2.087	4.170	5.350	5.670	7.130	2.130	0.750	0.590	2.050	0.984	1.339	4.5
1-5/8, 1-11/16, 1-3/4	2.063	4.190	2.252	4.530	5.590	5.910	7.480	2.130	0.830	0.590	2.285	1.220	1.622	5.1
1-7/8, 1-15/16, 2S	2.189	4.450	2.433	4.800	6.020	6.500	8.000	2.250	0.870	0.780	2.440	1.283	1.713	6.0
2, 2-3/16	2.437	4.920	2.717	5.310	6.890	7.360	9.130	2.360	0.980	0.780	2.550	1.319	1.783	8.2
2-1/4, 2-7/16	2.688	5.440	2.949	5.830	7.240	7.720	9.500	2.530	1.140	0.780	2.940	1.528	2.114	10.9

PB251UR (FOR HIGH SHAFT HEIGHTS)

SHAFT SIZE	A	B	C	D	E MIN.	E MAX.	F	G	H	J	L	M	S	WT. LBS.
1/2, 5/8	1.188	2.440	0.921	2.360	3.440	4.060	5.000	1.500	0.560	0.530	1.380	0.630	0.867	1.3
3/4	1.311	2.560	1.141	2.560	3.440	4.060	5.000	1.500	0.560	0.530	1.470	0.710	0.984	1.9
7/8, 1	1.437	2.800	1.339	2.870	3.810	4.440	5.510	1.500	0.590	0.530	1.520	0.768	1.063	2.4
1-1/8, 1-3/16, 1-1/4s	1.688	3.270	1.587	3.390	4.530	5.000	6.500	1.880	0.670	0.670	1.810	0.866	1.181	2.9
1-1/4, 1-3/8, 1-7/16	1.875	3.660	1.890	3.740	4.750	5.250	6.570	1.880	0.720	0.670	1.870	0.925	1.260	4.0
1-1/2	1.938	3.897	2.087	4.130	5.160	5.630	7.250	2.130	0.720	0.670	2.000	0.984	1.339	4.6
1-5/8, 1-11/16, 1-3/4	2.125	4.190	2.252	4.410	5.500	6.000	7.500	2.130	0.780	0.670	2.280	1.220	1.622	5.2
1-7/8, 1-15/16, 2S	2.250	4.500	2.433	4.690	6.00	6.530	8.120	2.360	0.810	0.780	2.500	1.283	1.713	6.2
2, 2-3/16	2.500	4.960	2.717	5.080	6.440	7.000	8.620	2.360	0.910	0.780	2.550	1.319	1.783	8.4
2-1/4, 2-7/16	2.750	5.440	2.949	5.670	6.970	7.500	9.500	2.750	0.980	0.780	3.060	1.528	2.114	11.1

For Load Ratings, See Page N-3
T-Zerk: 1/4-28 Taper

For Replacement Inserts, Use B250R

Dimensions shown are for reference only.
To order, specify type and bore size. Example: PB250UR x 1-7/16

DOWNLOAD AVAILABLE CAD MODELS AT: WWW.HUBCITYINC.COM

Certified prints are available upon request

EMAIL: hubsales@regalbeloit.com • www.hubcityinc.com



Hub City DuraLine™ Bearing Units

Pillow Blocks - Wide Inner Race

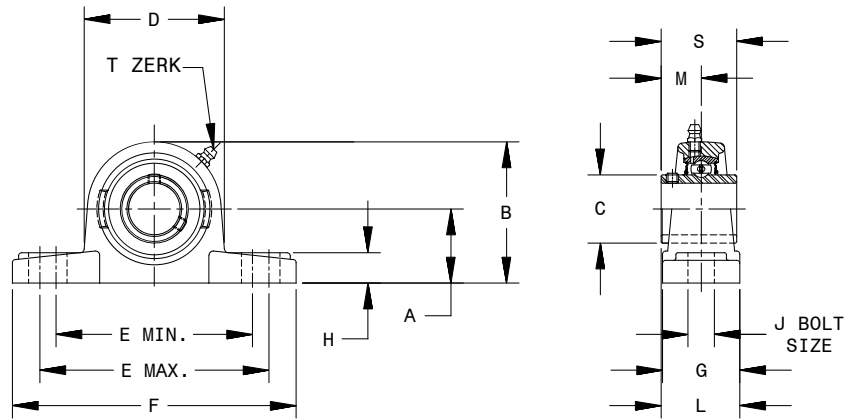
Series PB250DRW, PB251DRW

Features

- Ductile iron housings
- Higher strength and impact resistance for high shock loads
- Suitable to replace gray iron housed bearings
- Self-aligning replaceable bearing
- Pre-lubricated with lithium grease
- Steel retainers and anti-rotation pins
- Nitrile rubber seals with steel flingers
- Precision bored housings



200 SERIES 2 BOLT PILLOW BLOCK SETSCREW LOCK – WIDE INNER RING



200 SERIES - 2 BOLT PILLOW BLOCKS - DUCTILE IRON - SETSCREW LOCK - RELUBE TYPE - WIDE INNER RING

PB250DRW (FOR LOW SHAFT HEIGHTS)

SHAFT SIZE	A	B	C	D	E MIN	E MAX	F	G	H	J	L	M	S	WT. LBS
1/2, 5/8	1.062	2.130	1.130	2.250	3.330	3.680	4.750	1.380	0.510	0.472	1.410	0.720	1.220	1.2
3/4, 20mm	1.250	2.520	1.142	2.640	3.680	4.030	5.250	1.610	0.560	0.472	1.530	0.720	1.220	1.9
7/8, 1, 25mm	1.312	2.680	1.339	2.800	3.960	4.310	5.500	1.770	0.630	0.472	1.660	0.776	1.339	2.4
1-1/8, 1-3/16, 1-1/4s, 30mm	1.562	3.150	1.591	3.270	4.600	4.930	6.310	1.890	0.670	0.590	1.820	0.874	1.500	3.0
1-1/4, 1-3/8, 1-7/16, 35mm	1.812	3.620	1.866	3.860	4.830	5.170	6.560	1.890	0.750	0.590	1.950	1.000	1.689	3.8
1-1/2, 40mm	1.937	3.940	2.075	4.170	5.350	5.680	7.130	2.130	0.750	0.590	2.250	1.189	1.937	4.8
1-5/8, 1-11/16, 1-3/4, 45mm	2.062	4.170	2.248	4.530	5.580	5.920	7.500	2.130	0.830	0.590	2.250	1.189	1.937	5.4
1-7/8, 1-15/16, 2s, 50mm	2.187	4.450	2.465	4.800	6.020	6.500	8.00	2.240	0.870	0.787	2.400	1.283	2.031	6.5
2, 2-3/16, 55mm	2.437	4.920	2.776	5.310	6.890	7.360	9.130	2.360	0.980	0.787	2.500	1.315	2.189	8.7
2-1/4, 2-7/16, 60mm	2.687	5.430	3.059	5.830	7.240	7.720	9.500	2.520	1.140	0.787	2.820	1.563	2.563	11.4

PB251DRW (FOR HIGH SHAFT HEIGHTS)

SHAFT SIZE	A	B	C	D	E MIN	E MAX	F	G	H	J	L	M	S	WT. LBS
1/2, 5/8	1.187	2.440	1.130	2.250	3.510	3.970	5.000	1.500	0.550	0.512	1.470	0.720	1.220	1.3
3/4, 20mm	1.312	2.560	1.142	2.640	3.500	4.090	5.000	1.500	0.550	0.512	1.480	0.720	1.220	2.0
7/8, 1, 25mm	1.437	2.800	1.339	2.800	3.900	4.370	5.500	1.500	0.590	0.512	1.530	0.776	1.339	2.5
1-1/8, 1-3/16, 1-1/4s, 30mm	1.687	3.270	1.591	3.270	4.560	4.970	6.500	1.890	0.670	0.670	1.820	0.874	1.500	3.1
1-1/4, 1-3/8, 1-7/16, 35mm	1.875	3.660	1.866	3.860	4.790	5.210	6.560	1.890	0.710	0.670	1.950	1.000	1.689	4.2
1-1/2, 40mm	1.937	3.860	2.075	4.170	5.190	5.600	7.250	2.130	0.710	0.670	2.250	1.189	1.937	4.9
1-5/8, 1-11/16, 1-3/4, 45mm	2.125	4.170	2.248	4.530	5.540	5.960	7.500	2.130	0.790	0.670	2.250	1.189	1.937	5.5
1-7/8, 1-15/16, 2s, 50mm	2.250	4.490	2.465	4.800	6.040	6.520	8.120	2.360	0.830	0.787	2.460	1.283	2.031	6.7
2, 2-3/16, 55mm	2.500	4.960	2.776	5.310	6.480	7.010	8.620	2.360	0.910	0.787	2.500	1.315	2.189	8.9
2-1/4, 2-7/16, 60mm	2.750	5.430	3.059	5.830	6.990	7.500	9.500	2.750	0.980	0.787	2.940	1.563	2.563	11.6

For Load Ratings, See Page N-3
T-Zerk: 1/4-28 Taper

For Replacement Inserts, Use B250RW

Dimensions shown are for reference only.
To order, specify type and bore size. Example: PB250DRW x 1-7/16

DOWNLOAD AVAILABLE CAD MODELS AT: WWW.HUBCITYINC.COM

Certified prints are available upon request

CALL: (605) 225-0360 • FAX: (605) 225-0567

Hub City DuraLine™ Bearing Units

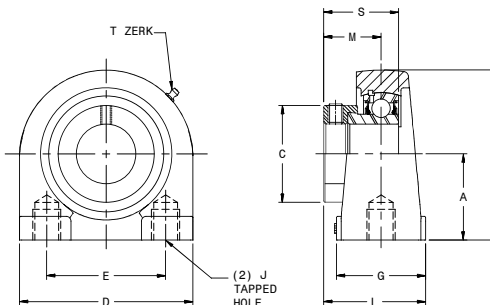
Tapped Base

Series TPB220UR

Features

- Self-aligning replaceable bearing
- Pre-lubricated with lithium grease
- Steel retainers
- Anti-rotation pins
- Nitrile rubber seals with steel trash guards
- Precision bored housings

200 SERIES PILLOW BLOCK ECCENTRIC LOCK



200 SERIES - TAPPED BASE PILLOW BLOCKS - CAST IRON - ECCENTRIC LOCK - RELUBE TYPE											
TPB220UR											
SHAFT SIZE	A	B	C	D	E	G	J - TAPPED HOLES	L	M	S	WT. LBS.
1/2, 5/8	1.312	2.560	1.125	2.870	2.000	1.500	3/8-16UNC X .50	1.640	0.921	1.469	0.8
3/4	1.312	2.560	1.299	2.870	2.000	1.500	3/8-16UNC X .50	1.695	1.049	1.720	1.0
7/8, 1	1.437	2.800	1.476	3.000	2.000	1.500	3/8-16UNC X .50	1.675	1.061	1.748	1.5
1-1/8, 1-3/16, 1-1/4s	1.687	3.380	1.732	4.000	3.000	1.500	7/16-14UNC X .63	1.841	1.187	1.906	2.2
1-1/4, 1-3/8, 1-7/16	1.875	3.740	2.165	4.250	3.250	1.890	1/2-13UNC X .78	2.142	1.274	2.016	2.8
1-1/2	1.937	3.940	2.283	4.610	3.500	1.890	1/2-13UNC X .78	2.311	1.376	2.220	3.8
1-5/8, 1-11/16, 1-3/4	2.125	4.250	2.480	5.000	3.750	2.000	1/2-13UNC X .78	2.351	1.376	2.220	5.2
1-7/8, 1-15/16, 2s	2.250	4.650	2.717	5.500	4.000	2.000	5/8-11UNC X .90	2.332	1.500	2.469	5.6
2, 2-3/16	2.250	4.650	2.992	5.500	4.000	2.000	5/8-11UNC X .98	2.497	1.442	2.811	5.7

For Load Ratings, See Page N-3
T-Zerk: 1/4-28 Taper

To order, specify type and bore size. Example: TPB220UR x 1-7/16
For replacement inserts, use B220R

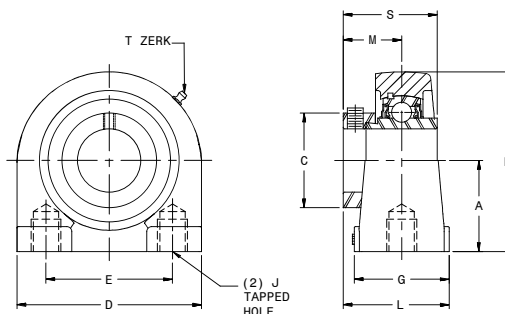
Tapped Base - Wide Inner Race

Series TPB220URW

Features

- Self-aligning replaceable bearing
- Pre-lubricated with lithium grease
- Steel retainers
- Anti-rotation pins
- Nitrile rubber seals with steel flingers
- Precision bored housings

200 SERIES PILLOW BLOCK ECCENTRIC LOCK – WIDE INNER RING



200 SERIES - TAPPED BASE PILLOW BLOCKS - CAST IRON - ECCENTRIC LOCK - RELUBE TYPE - WIDE INNER RING											
TPB220URW											
SHAFT SIZE	A	B	C	D	E	G	J - TAPPED HOLES	L	M	S	WT. LBS.
1/2, 5/8	1.312	2.560	1.125	2.870	2.000	1.500	3/8-16UNC X .50	1.670	0.921	1.469	0.8
3/4	1.312	2.560	1.299	2.870	2.000	1.500	3/8-16UNC X .50	1.800	1.049	1.720	1.0
7/8, 1	1.437	2.800	1.476	3.000	2.000	1.500	3/8-16UNC X .50	1.810	1.061	1.7480	1.5
1-1/8, 1-3/16, 1-1/4s	1.687	3.380	1.732	4.000	3.000	1.500	7/16-14UNC X .63	1.940	1.187	1.906	2.2
1-1/4, 1-3/8, 1-7/16	1.875	3.740	2.165	4.250	3.250	1.890	1/2-13UNC X .78	2.220	1.274	2.016	2.8
1-1/2	1.937	3.940	2.283	4.610	3.500	1.890	1/2-13UNC X .78	2.320	1.376	2.220	3.8
1-5/8, 1-11/16, 1-3/4	2.125	4.250	2.480	5.000	3.750	2.000	1/2-13UNC X .78	2.380	1.376	2.220	5.2
1-7/8, 1-15/16, 2s	2.250	4.650	2.717	5.500	4.000	2.000	5/8-11UNC X .90	2.500	1.500	2.469	5.6
2, 2-3/16	2.250	4.650	2.992	5.500	4.000	2.000	5/8-11UNC X .98	2.720	1.667	2.811	5.7

For Load Ratings, See Page N-3
T-Zerk: 1/4-28 Taper

To order, specify type and bore size. Example: TPB220URW x 1-7/16
For replacement inserts, use B220RW

DOWNLOAD AVAILABLE CAD MODELS AT: WWW.HUBCITYINC.COM

Certified prints are available upon request

EMAIL: hubsales@regalbeloit.com • www.hubcityinc.com



Hub City DuraLine™ Bearing Units

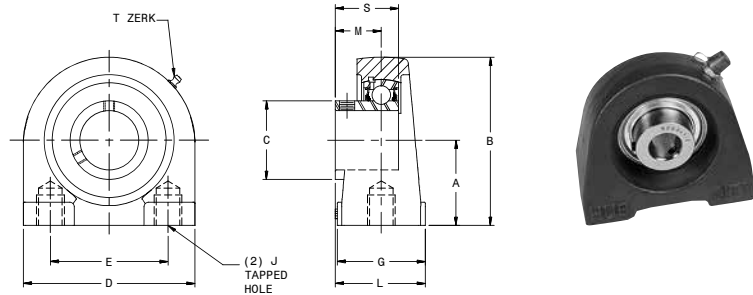
Tapped Base

Series TPB250UR

200 SERIES PILLOW BLOCK SETSCREW LOCK

Features

- Self-aligning replaceable bearing
- Pre-lubricated with lithium grease
- Steel retainers
- Anti-rotation pins
- Nitrile rubber seals with steel trash guards
- Precision bored housings



200 SERIES - TAPPED BASE PILLOW BLOCKS - CAST IRON - SETSCREW LOCK - RELUBE TYPE											
TPB250UR											
SHAFT SIZE	A	B	C	D	E	G	J - TAPPED HOLES	L	M	S	WT. LBS.
1/2, 5/8	1.312	2.560	0.921	2.870	2.000	1.500	3/8-16UNC X .50	1.380	0.630	0.866	0.8
3/4	1.312	2.560	1.141	2.870	2.000	1.500	3/8-16UNC X .50	1.460	0.709	0.984	0.9
7/8, 1	1.437	2.800	1.339	3.000	2.000	1.500	3/8-16UNC X .50	1.520	0.787	1.063	1.4
1-1/8, 1-3/16, 1-1/4s	1.687	3.380	1.587	4.000	3.000	1.500	7/16-14UNC X .63	1.620	0.866	1.181	2.0
1-1/4, 1-3/8, 1-7/16	1.875	3.740	1.890	4.250	3.250	1.890	7/16-14UNC X .78	1.870	0.924	1.259	2.6
1-1/2	1.937	3.940	2.087	4.610	3.500	1.890	1/2-13UNC X .78	1.930	0.984	1.338	3.5
1-5/8, 1-11/16, 1-3/4	2.125	4.250	2.252	5.000	3.750	2.000	1/2-13UNC X .78	2.250	1.248	1.622	4.9
1-7/8, 1-15/16, 2S	2.250	4.650	2.433	5.500	4.000	2.000	5/8-11UNC X .90	2.320	1.319	1.712	5.1
2, 2-3/16	2.250	4.650	2.717	5.500	4.000	2.000	5/8-11UNC X .98	2.320	1.370	1.783	5.2

For Load Ratings, See Page N-3
T-Zerk: 1/4-28 Taper

To order, specify type and bore size. Example: TPB250UR x 1-7/16
For replacement inserts, use B250R

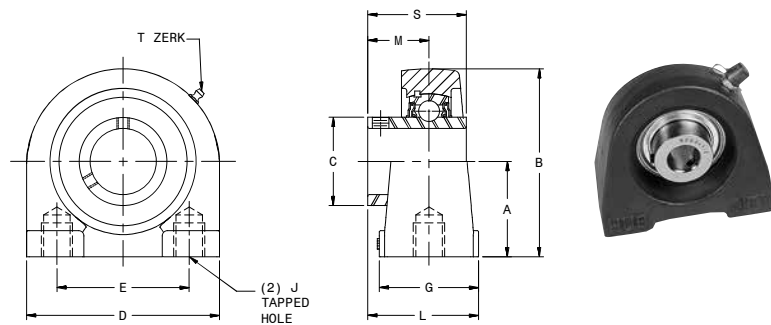
Tapped Base - Wide Inner Race

Series TPB250URW

200 SERIES PILLOW BLOCK SETSCREW LOCK – WIDE INNER RING

Features

- Self-aligning replaceable bearing
- Pre-lubricated with lithium grease
- Steel retainers
- Anti-rotation pins
- Nitrile rubber seals with steel flingers
- Precision bored housings



200 SERIES - TAPPED BASE PILLOW BLOCKS - CAST IRON - SETSCREW LOCK - RELUBE TYPE - WIDE INNER RING											
TPB250DRW											
SHAFT SIZE	A	B	C	D	E	G	J - TAPPED HOLES	L	M	S	WT. LBS.
1/2, 5/8	1.312	2.560	0.969	2.870	2.000	1.500	3/8-16UNC X .50	1.380	0.629	1.024	0.8
3/4, 20mm	1.312	2.560	1.142	2.870	2.000	1.500	3/8-16UNC X .50	1.460	0.720	1.220	1.0
7/8, 1, 25mm	1.437	2.800	1.339	3.000	2.000	1.500	3/8-16UNC X .50	1.520	0.776	1.339	1.5
1-1/8, 1-3/16, 1-1/4s, 30mm	1.687	3.380	1.591	4.000	3.000	1.500	7/16-14UNC X .63	1.620	0.874	1.500	2.2
1-1/4, 1-3/8, 1-7/16, 35mm	1.875	3.740	1.866	4.250	3.250	1.890	1/2-13UNC X .78	1.870	1.000	1.689	2.8
1-1/2, 40mm	1.937	3.940	2.075	4.610	3.500	1.890	1/2-13UNC X .78	1.930	1.189	1.937	3.8
1-5/8, 1-11/16, 1-3/4, 45mm	2.125	4.250	2.248	5.000	3.750	2.000	1/2-13UNC X .78	2.250	1.189	1.937	5.2
1-7/8, 1-15/16, 2s, 50mm	2.250	4.650	2.465	5.500	4.000	2.000	5/8-11UNC X .90	2.320	1.283	2.031	5.6
2, 2-3/16, 55mm	2.250	4.650	3.059	5.500	4.000	2.000	5/8-11UNC X .98	2.320	1.315	2.189	5.7

For Load Ratings, See Page N-3
T-Zerk: 1/4-28 Taper

To order, specify type and bore size. Example: TPB250URW x 1-7/16
For replacement inserts, use B250RW

DOWNLOAD AVAILABLE CAD MODELS AT: WWW.HUBCITYINC.COM

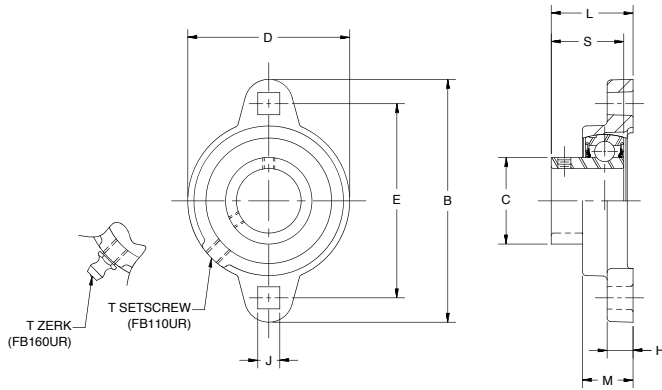
Certified prints are available upon request

CALL: (605) 225-0360 • FAX: (605) 225-0567

Hub City DuraLine™ Bearing Units Flange Blocks

Series FB110UR, FB130UR, FB160UR

100 SERIES 2 BOLT FLANGE BLOCK SETSCREW LOCK

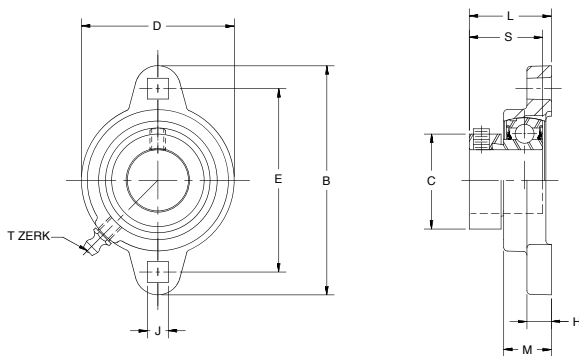


Features

- Self-aligning replaceable bearing
- Pre-lubricated with lithium grease
- Steel retainers
- Anti-rotation pins
- Nitrile rubber seals with steel trash guards
- Precision bored housings



100 SERIES – 2 BOLT FLANGE BLOCKS – DUCTILE IRON – SETSCREW LOCK										
FB110UR (NON-RELUBE) & FB160UR (RELUBE)										
SHAFT SIZE	B	C	D	E	H	J	L	M	S	WT. LBS.
1/2, 5/8	3.190	0.921	2.200	2.500	0.380	0.280	1.000	0.710	0.866	0.6
3/4	3.540	1.142	2.400	2.815	0.430	0.340	1.140	0.790	0.984	0.8
7/8, 1	3.740	1.339	2.520	2.992	0.430	0.340	1.200	0.790	1.063	0.8
1-1/8, 1-3/16, 1-1/4s	4.450	1.587	2.990	3.560	0.470	0.410	1.340	0.890	1.181	1.1
1-1/4, 1-3/8, 1-7/16	4.800	1.889	3.500	3.937	0.510	0.410	1.440	0.940	1.260	1.5



100 SERIES – 2 BOLT FLANGE BLOCKS – DUCTILE IRON – ECCENTRIC LOCK										
FB130UR										
SHAFT SIZE	B	C	D	E	H	J	L	M	S	WT. LBS.
1/2, 5/8	3.190	1.102	2.200	2.500	0.380	0.280	1.260	0.710	1.126	0.6
3/4	3.540	1.299	2.400	2.815	0.430	0.340	1.380	0.790	1.220	0.8
7/8, 1	3.740	1.476	2.520	2.992	0.430	0.340	1.360	0.790	1.220	0.8
1-1/8, 1-3/16, 1-1/4s	4.450	1.732	2.990	3.560	0.470	0.410	1.560	0.890	1.405	1.1
1-1/4, 1-3/8, 1-7/16	4.800	2.165	3.500	3.937	0.510	0.410	1.710	0.940	1.531	1.5

For Load Ratings, See Page N-3
T-Zerk: 1/4-28 Taper
T-Setscrew: 1/4-28

DuraLine Replacement Inserts
For 100 Series Setscrew Lock Use B250R, for 100 Series Eccentric Lock Use B220R

Dimensions shown are for reference only.
To order, specify type and bore size. Example: FB260UR x 1-7/16

DOWNLOAD AVAILABLE CAD MODELS AT: WWW.HUBCITYINC.COM
Certified prints are available upon request
EMAIL: hubsales@regalbeloit.com • www.hubcityinc.com

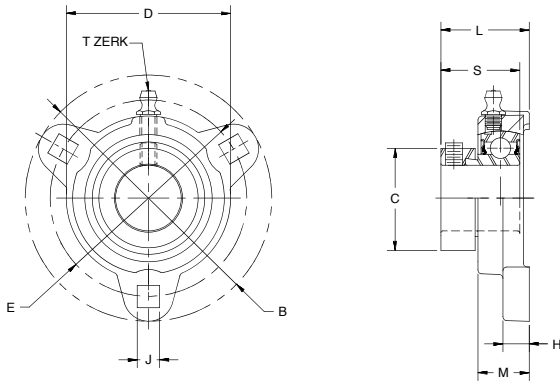


Hub City DuraLine™ Bearing Units

Flange Blocks

Series FB120UR, FB150UR

100 SERIES 3 BOLT FLANGE BLOCK SETSCREW LOCK



Features

- Self-aligning replaceable bearing
- Pre-lubricated with lithium grease
- Steel retainers
- Anti-rotation pins
- Nitrile rubber seals with steel trash guards
- Precision bored housings



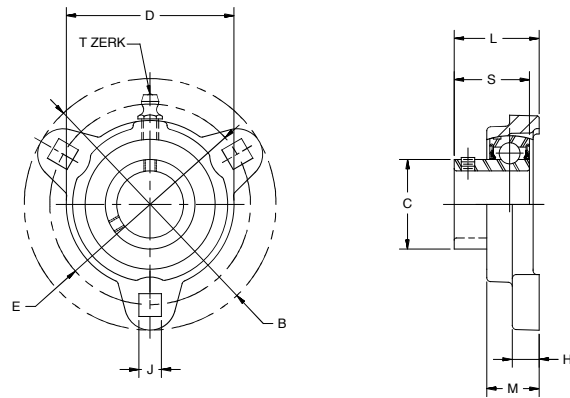
100 SERIES – 3 BOLT FLANGE BLOCKS – DUCTILE IRON – ECCENTRIC LOCK										
FB120UR										
SHAFT SIZE	B	C	D	E	H	J	L	M	S	WT. LBS
1/2, 5/8	3.190	1.102	1.930	2.500	0.390	0.280	1.280	0.690	1.126	0.6
3/4	3.560	1.299	2.440	2.811	0.390	0.340	1.350	0.780	1.220	0.8
7/8, 1	3.750	1.476	2.830	3.000	0.470	0.340	1.330	0.780	1.220	0.8
1-1/8, 1-3/16, 1-1/4s	4.430	1.732	3.310	3.563	0.470	0.410	1.560	0.870	1.405	1.1
1-1/4, 1-3/8, 1-7/16	4.800	2.165	3.540	3.937	0.530	0.410	1.730	0.940	1.531	1.7

DuraLine Replacement Inserts

For 100 Series Setscrew Lock Use B250R, for 100 Series Eccentric Lock Use B220R

For Load Ratings, See Page N-3

T-Zerk: 1/4-28 Taper



100 SERIES – 3 BOLT FLANGE BLOCKS – DUCTILE IRON – SETSCREW LOCK										
FB150UR (RELUBE)										
SHAFT SIZE	B	C	D	E	H	J	L	M	S	WT. LBS
1/2, 5/8	3.190	0.921	1.930	2.500	0.390	0.280	1.020	0.690	0.866	0.6
3/4	3.560	1.142	2.440	2.811	0.390	0.340	1.140	0.780	0.984	0.8
7/8, 1	3.750	1.339	2.830	3.000	0.470	0.340	1.170	0.780	1.063	0.8
1-1/8, 1-3/16, 1-1/4s	4.440	1.587	3.310	3.563	0.470	0.410	1.340	0.870	1.181	1.1
1-1/4, 1-3/8, 1-7/16	4.800	1.889	3.540	3.937	0.530	0.410	1.450	0.940	1.260	1.7

For Load Ratings, See Page N-3

T-Zerk: 1/4-28 Taper

For replacement inserts, use B250R

Dimensions shown are for reference only.

To order, specify type and bore size. Example: FB150UR x 1-7/16

DOWNLOAD AVAILABLE CAD MODELS AT: WWW.HUBCITYINC.COM

Certified prints are available upon request

CALL: (605) 225-0360 • FAX: (605) 225-0567

Hub City DuraLine™ Bearing Units Flange Blocks

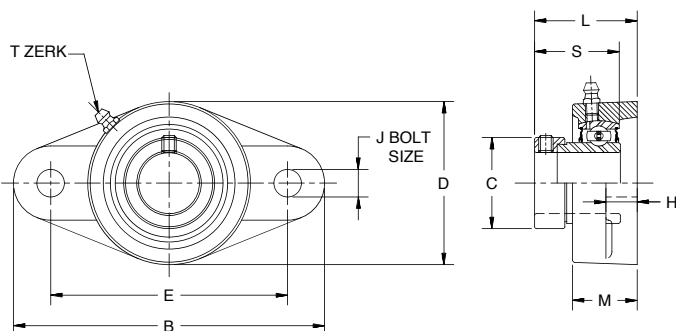
Series FB230UR, FB260UR

Features

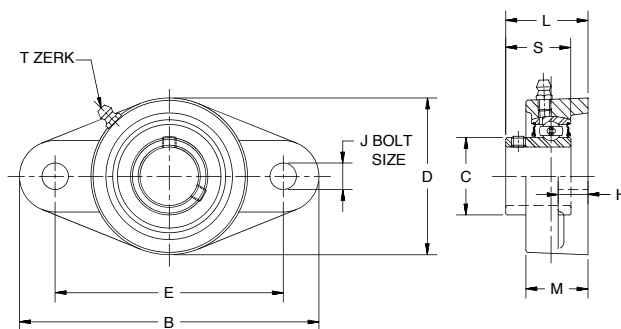
- Self-aligning replaceable bearing
- Pre-lubricated with lithium grease
- Steel retainers
- Anti-rotation pins
- Nitrile rubber seals with steel trash guards
- Precision bored housings



200 SERIES 2 BOLT FLANGE BLOCK
ECCENTRIC LOCK



200 SERIES 2 BOLT FLANGE BLOCK
SETSCREW LOCK



200 SERIES – 2 BOLT FLANGE BLOCKS – CAST IRON – ECCENTRIC LOCK

FB230UR

SHAFT SIZE	B	C	D	E	H	J	L	M	S	WT. LBS.
1/2, 5/8	3.900	1.100	2.360	3.000	0.430	0.410	1.562	0.980	1.126	1.0
3/4	4.410	1.300	2.360	3.531	0.430	0.410	1.508	0.980	1.220	1.3
7/8, 1	4.880	1.480	2.760	3.890	0.510	0.490	1.551	1.060	1.220	1.9
1-1/8, 1-3/16, 1-1/4s	5.550	1.730	3.270	4.594	0.510	0.490	1.795	1.180	1.406	2.7
1-1/4, 1-3/8, 1-7/16	6.140	2.170	3.740	5.125	0.550	0.550	1.870	1.140	1.531	3.1
1-1/2	6.730	2.280	4.130	5.657	0.550	0.550	2.193	1.400	1.720	3.6
1-5/8, 1-11/16, 1-3/4	7.050	2.480	4.370	5.843	0.550	0.550	2.220	1.400	1.720	4.3
1-7/8, 1-15/16, 2S	7.440	2.720	4.570	6.189	0.550	0.550	2.201	1.470	1.720	5.3
2, 2-3/16	8.500	2.990	5.240	7.252	0.830	0.710	2.492	1.630	1.906	7.6

200 SERIES – 2 BOLT FLANGE BLOCKS – CAST IRON – SETSCREW LOCK

FB260UR

SHAFT SIZE	B	C	D	E	H	J	L	M	S	WT. LBS.
1/2, 5/8	3.900	0.920	2.360	3.000	0.430	0.410	1.303	0.980	0.866	0.8
3/4	4.410	1.140	2.360	3.531	0.430	0.410	1.271	0.980	0.984	1.0
7/8, 1	4.880	1.340	2.760	3.890	0.510	0.490	1.394	1.060	1.063	1.4
1-1/8, 1-3/16, 1-1/4s	5.550	1.590	3.270	4.594	0.510	0.490	1.571	1.180	1.181	1.9
1-1/4, 1-3/8, 1-7/16	6.140	1.890	3.740	5.125	0.550	0.550	1.597	1.140	1.259	2.9
1-1/2	6.730	2.086	4.130	5.657	0.550	0.550	1.812	1.400	1.339	3.9
1-5/8, 1-11/16, 1-3/4	7.050	2.251	4.370	5.843	0.550	0.550	2.094	1.400	1.622	4.5
1-7/8, 1-15/16, 2S	7.440	2.433	4.570	6.189	0.550	0.550	2.158	1.470	1.713	4.9
2, 2-3/16	8.500	2.716	5.240	7.252	0.830	0.710	2.318	1.630	1.783	6.5

DuraLine Replacement Inserts

For 200 Series Setscrew Lock Use B250R, for 200 Series Eccentric Lock Use B220R

For Load Ratings, See Page N-3

T-Zerk: 1/4-28 Taper

Dimensions shown are for reference only.

To order, specify type and bore size. Example: FB260UR x 1-7/16

DOWNLOAD AVAILABLE CAD MODELS AT: WWW.HUBCITYINC.COM

Certified prints are available upon request

EMAIL: hubsales@regalbeloit.com • www.hubcityinc.com



Hub City DuraLine™ Bearing Units

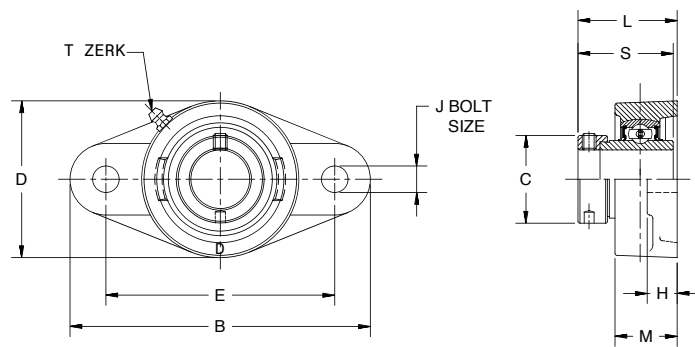
Flange Blocks - Wide Inner Race

Series FB230DRW, FB260DRW

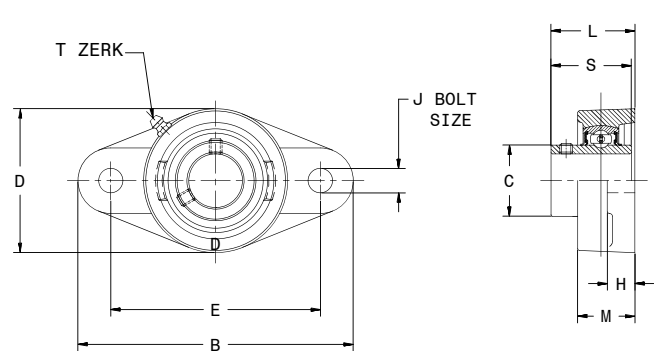
Features

- Ductile iron housings
- Higher strength and impact resistance for high shock loads
- Suitable to replace gray iron housed bearings
- Self-aligning replaceable bearing
- Pre-lubricated with lithium grease
- Steel retainers
- Anti-rotation pins
- Nitrile rubber seals with steel flingers
- Precision bored housings

200 SERIES 2 BOLT FLANGE BLOCK
ECCENTRIC LOCK – WIDE INNER RING



200 SERIES 2 BOLT FLANGE BLOCK
SETSCREW LOCK – WIDE INNER RING



200 SERIES - 2 BOLT FLANGE BLOCKS - DUCTILE - ECCENTRIC LOCK - WIDE INNER RING										
FB230DRW										
SHAFT SIZE	B	C	D	E	H	J	L	M	S	WT. LBS.
3/4	4.410	1.300	2.360	3.531	0.430	0.413	1.797	1.260	1.720	1.4
7/8, 1	4.880	1.480	2.760	3.890	0.510	0.492	1.809	1.260	1.748	2.0
1-1/8, 1-3/16, 1-1/4s	5.550	1.730	3.230	4.594	0.510	0.492	1.998	1.380	1.905	2.9
1-1/4, 1-3/8, 1-7/16	6.140	2.170	3.740	5.125	0.590	0.551	2.115	1.470	2.016	3.3
1-1/2	6.770	2.280	4.130	5.657	0.590	0.551	2.313	1.690	2.220	3.9
1-5/8, 1-11/16, 1-3/4	7.050	2.480	4.370	5.843	0.590	0.630	2.306	1.690	2.220	4.6
1-7/8, 1-15/16, 2s	7.440	2.720	4.560	6.189	0.590	0.630	2.626	1.880	2.468	5.8
2, 2-3/16	8.500	2.990	5.240	7.252	0.830	0.709	2.968	2.000	2.811	8.1



200 SERIES - 2 BOLT FLANGE BLOCKS - DUCTILE - SETSCREW LOCK - WIDE INNER RING										
FB260DRW										
SHAFT SIZE	B	C	D	E	H	J	L	M	S	WT. LBS.
3/4, 20mm	4.410	1.142	2.360	3.531	0.430	0.413	1.468	1.260	1.220	1.1
7/8, 1, 25mm	4.880	1.339	2.760	3.890	0.510	0.492	1.523	1.260	1.339	1.5
1-1/8, 1-3/16, 1-1/4s, 30mm	5.550	1.591	3.230	4.594	0.510	0.492	1.685	1.380	1.500	2.1
1-1/4, 1-3/8, 1-7/16, 35mm	6.140	1.866	3.740	5.125	0.590	0.551	1.842	1.470	1.689	3.1
1-1/2, 40mm	6.770	2.075	4.130	5.657	0.590	0.551	2.126	1.690	1.937	4.2
1-5/8, 1-11/16, 1-3/4, 45mm	7.050	2.248	4.370	5.843	0.590	0.630	2.126	1.690	1.937	4.8
1-7/8, 1-15/16, 2s, 50mm	7.440	2.465	4.560	6.189	0.590	0.630	2.409	1.880	2.031	5.2
2, 2-3/16, 55mm	8.500	2.776	5.240	7.252	0.830	0.709	2.567	2.000	2.189	7.0



For Load Ratings, See Page N-3
T-Zerk: 1/4-28 Taper

DuraLine Replacement Inserts

For 100 and 200 Series Setscrew Lock Use B250RW, for 100 and 200 Series Eccentric Lock Use B220RW

Dimensions shown are for reference only.

To order, specify type and bore size. Example: FB260DRW x 1-7/16

DOWNLOAD AVAILABLE CAD MODELS AT: WWW.HUBCITYINC.COM

Certified prints are available upon request

CALL: (605) 225-0360 • FAX: (605) 225-0567

Hub City DuraLine™ Bearing Units

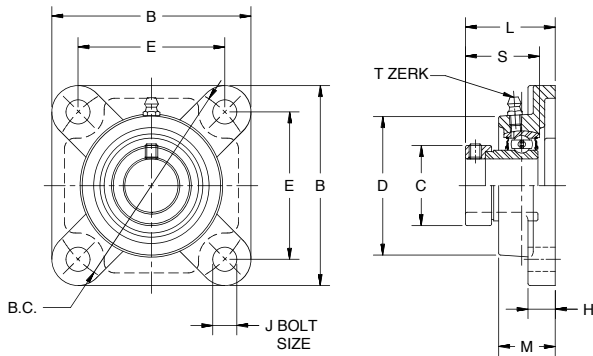
Flange Blocks

Series FB220UR, FB250UR

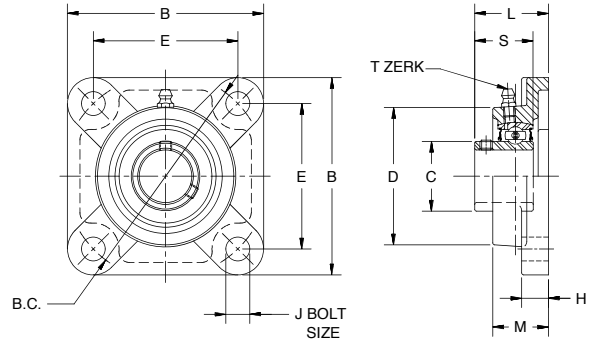
Features

- Self-aligning replaceable bearing
- Pre-lubricated with lithium grease
- Steel retainers
- Anti-rotation pins
- Nitrile rubber seals with steel trash guards
- Precision bored housings

200 SERIES 4 BOLT FLANGE BLOCK
ECCENTRIC LOCK



200 SERIES 4 BOLT FLANGE
BLOCK SETSCREW LOCK



200 SERIES – 4 BOLT FLANGE BLOCKS – CAST IRON – ECCENTRIC LOCK											
FB220UR											
SHAFT SIZE	B	B.C.	C	D	E	H	J	L	M	S	WT. LBS.
1/2, 5/8	3.000	3.000	1.100	2.090	2.126	0.430	0.450	1.480	0.940	1.125	1.0
3/4	3.380	3.563	1.300	2.360	2.520	0.470	0.470	1.535	1.000	1.220	1.4
7/8, 1	3.740	3.898	1.480	2.800	2.756	0.550	0.470	1.555	1.060	1.220	1.8
1-1/8, 1-3/16, 1-1/4s	4.250	4.625	1.730	3.190	3.268	0.550	0.470	1.799	1.160	1.406	2.6
1-1/4, 1-3/8, 1-7/16	4.610	5.125	2.170	3.620	3.622	0.630	0.550	1.945	1.280	1.531	4.3
1-1/2	5.120	5.677	2.280	4.090	4.016	0.630	0.630	2.193	1.360	1.720	5.3
1-5/8, 1-11/16, 1-3/4	5.390	5.846	2.480	4.250	4.134	0.710	0.630	2.213	1.500	1.720	5.6
1-7/8, 1-15/16, 2S	5.630	6.181	2.710	4.450	4.370	0.710	0.630	2.193	1.570	1.720	6.5
2, 2-3/16	6.380	7.236	2.990	4.920	5.118	0.780	0.750	2.476	1.690	1.906	9.1
2-1/4, 2-7/16	6.880	7.960	3.310	5.310	5.630	0.780	0.750	2.646	1.890	1.937	12.0



200 SERIES – 4 BOLT FLANGE BLOCKS – CAST IRON – SETSCREW LOCK											
FB250UR											
SHAFT SIZE	B	B.C.	C	D	E	H	J	L	M	S	WT. LBS.
1/2, 5/8	3.000	3.000	0.920	2.090	2.126	0.430	0.450	1.220	0.940	0.866	1.0
3/4	3.380	3.563	1.140	2.360	2.520	0.470	0.470	1.300	1.000	0.984	1.4
7/8, 1	3.740	3.898	1.340	2.800	2.756	0.550	0.470	1.398	1.060	1.063	1.8
1-1/8, 1-3/16, 1-1/4s	4.250	4.625	1.590	3.190	3.268	0.550	0.470	1.575	1.160	1.181	2.6
1-1/4, 1-3/8, 1-7/16	4.610	5.125	1.890	3.620	3.622	0.630	0.550	1.673	1.280	1.260	4.2
1-1/2	5.120	5.677	2.090	4.090	4.016	0.630	0.630	1.811	1.360	1.339	5.3
1-5/8, 1-11/16, 1-3/4	5.390	5.846	2.250	4.250	4.134	0.710	0.630	2.087	1.500	1.622	5.7
1-7/8, 1-15/16, 2S	5.630	6.181	2.430	4.450	4.370	0.710	0.630	2.150	1.570	1.713	6.6
2, 2-3/16	6.380	7.236	2.720	4.920	5.118	0.780	0.750	2.303	1.690	1.783	9.0
2-1/4, 2-7/16	6.880	7.960	2.950	5.310	5.630	0.780	0.750	2.669	1.890	2.114	12.0



For Load Ratings, See Page N-3
T-Zerk: 1/4-28 Taper

DuraLine Replacement Inserts

For 200 Series Setscrew Lock Use B250R, for 200 Series Eccentric Lock Use B220R

Dimensions shown are for reference only.

To order, specify type and bore size. Example: FB250UR x 1-7/16

DOWNLOAD AVAILABLE CAD MODELS AT: WWW.HUBCITYINC.COM

Certified prints are available upon request

EMAIL: hubsales@regalbeloit.com • www.hubcityinc.com



Hub City DuraLine™ Bearing Units

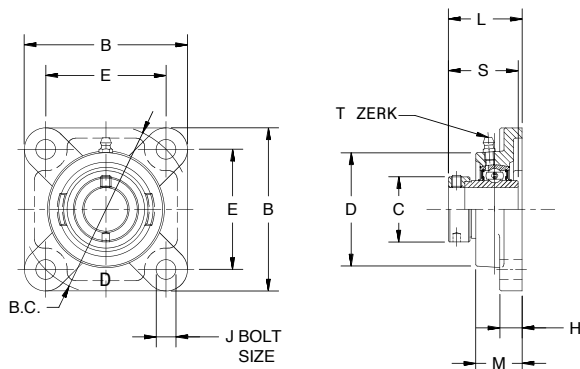
Flange Blocks - Wide Inner Race

Series FB220DRW, FB250DRW

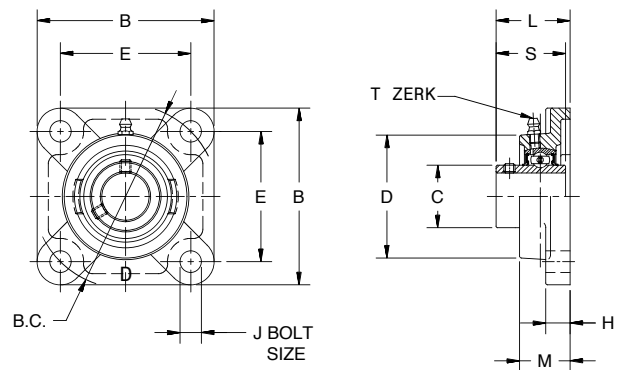
Features

- Ductile iron housings
- Higher strength and impact resistance for high shock loads
- Suitable to replace gray iron housed bearings
- Self-aligning replaceable bearing
- Pre-lubricated with lithium grease
- Steel retainers
- Anti-rotation pins
- Nitrile rubber seals with steel flingers
- Precision bored housings

200 SERIES 4 BOLT FLANGE BLOCK
ECCENTRIC LOCK – WIDE INNER RING



200 SERIES 4 BOLT FLANGE BLOCK
SETSCREW LOCK – WIDE INNER RING



200 SERIES - 4 BOLT FLANGE BLOCKS - DUCTILE IRON - ECCENTRIC LOCK - WIDE INNER RING

FB220DRW

SHAFT SIZE	B	B.C.	C	D	E	H	J	L	M	S	WT. LBS.
3/4	3.380	3.536	1.300	2.400	2.500	0.590	0.453	1.791	1.160	1.720	1.7
7/8, 1	3.660	3.889	1.480	2.750	2.750	0.590	0.453	1.807	1.180	1.748	2.1
1-1/8, 1-3/16, 1-1/4s	4.180	4.596	1.730	3.150	3.250	0.630	0.512	1.972	1.280	1.905	2.9
1-1/4, 1-3/8, 1-7/16	4.560	5.127	2.170	3.540	3.625	0.670	0.512	2.098	1.380	2.016	3.9
1-1/2	5.080	5.656	2.280	4.020	4.000	0.670	0.551	2.320	1.540	2.220	4.9
1-5/8, 1-11/16, 1-3/4	5.310	5.834	2.480	4.250	4.125	0.710	0.630	2.320	1.570	2.220	5.8
1-7/8, 1-15/16, 2s	5.630	6.187	2.710	4.490	4.375	0.790	0.630	2.602	1.770	2.468	6.5
2, 2-3/16	6.380	7.248	2.990	4.960	5.125	0.830	0.670	2.937	1.930	2.811	9.0
2-1/4, 2-7/16	6.890	7.955	3.310	5.390	5.625	0.870	0.670	3.181	2.110	3.063	10.7



200 SERIES - 4 BOLT FLANGE BLOCKS - DUCTILE IRON - SETSCREW LOCK - WIDE INNER RING

FB250DRW

SHAFT SIZE	B	B.C.	C	D	E	H	J	L	M	S	WT. LBS.
3/4, 20mm	3.380	3.536	1.142	2.400	2.500	0.590	0.453	1.486	1.160	1.220	1.5
7/8, 1, 25mm	3.660	3.889	1.339	2.750	2.750	0.590	0.453	1.523	1.180	1.339	1.9
1-1/8, 1-3/16, 1-1/4s, 30mm	4.180	4.596	1.591	3.150	3.250	0.630	0.512	1.661	1.280	1.500	2.8
1-1/4, 1-3/8, 1-7/16, 35mm	4.560	5.127	1.866	3.540	3.625	0.670	0.512	1.826	1.380	1.689	4.4
1-1/2, 40mm	5.080	5.656	2.075	4.020	4.000	0.670	0.551	2.133	1.540	1.937	5.6
1-5/8, 1-11/16, 1-3/4, 45mm	5.310	5.834	2.248	4.250	4.125	0.710	0.630	2.133	1.570	1.937	6.0
1-7/8, 1-15/16, 2s, 50mm	5.630	6.187	2.465	4.490	4.375	0.790	0.630	2.386	1.770	2.031	7.1
2, 2-3/16, 55mm	6.380	7.248	2.776	4.960	5.125	0.830	0.670	2.535	1.930	2.189	9.5
2-1/4, 2-7/16, 60mm	6.890	7.955	3.059	5.390	5.625	0.870	0.670	2.886	2.110	2.563	12.4



For Load Ratings, See Page N-3

T-Zerk: 1/4-28 Taper

DuraLine Replacement Inserts

For 100 and 200 Series Setscrew Lock Use B250RW, for 100 and 200 Series Eccentric Lock Use B220RW

Dimensions shown are for reference only. To order, specify type and bore size. Example: FB250DRW x 1-7/16

DOWNLOAD AVAILABLE CAD MODELS AT: WWW.HUBCITYINC.COM

Certified prints are available upon request

CALL: (605) 225-0360 • FAX: (605) 225-0567

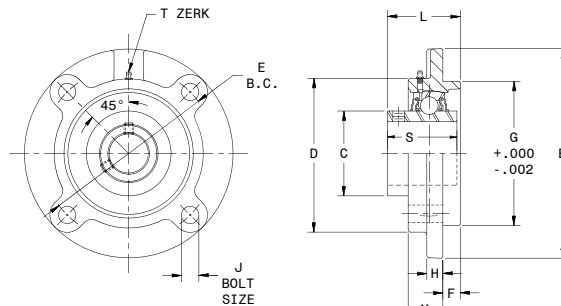
Hub City DuraLine™ Bearing Units

Cast Iron Flange Cartridge

Series FC250URW

Features

- Relube type. Prelubricated at factory
- Setscrew locking
- Self-aligning replacement bearing
- Nitrile rubber seals with steel trash guard
- Precision bored Cast Iron Housing



SHAFT SIZE	FC250URW - FLANGE CARTRIDGE - CAST IRON - SETSCREW - WIDE INNER RING												WT. LBS.
	B	C	D	E	F	G	H	J	L	M	S		
1-1/8, 1-3/16, 1-1/4s, 30mm	4.370	1.591	3.250	3.622	0.250	3.000	0.370	0.374	1.520	0.940	1.268	3.3	
1-1/4, 1-3/8, 1-7/16, 35mm	5.000	1.866	3.620	4.134	0.370	3.374	0.370	0.472	1.680	0.870	1.315	3.9	
1-1/2, 40mm	5.240	2.075	3.880	4.370	0.440	3.622	0.430	0.472	1.980	1.020	1.543	4.1	
1-5/8, 1-11/16, 1-3/4, 45mm	6.100	2.248	4.250	5.118	0.470	4.252	0.470	0.551	1.980	0.870	1.417	5.5	
1-7/8, 1-15/16, 2s, 50mm	6.130	2.465	4.500	5.118	0.470	4.252	0.430	0.551	2.070	0.980	1.598	6.1	
2, 2-3/16, 55mm	6.380	2.776	4.880	5.394	0.630	4.500	0.510	0.551	2.180	0.980	1.590	8.9	
2-1/4, 2-7/16, 60mm	7.090	3.059	5.380	5.984	0.870	5.000	0.630	0.630	2.590	1.020	1.720	11.3	

Part Numbers are specified by "FC250URW" and Bore Size. Example: FC250URW x 1-1/2.
T-Zerk: 1/4-28 Taper

For replacement inserts, use B250RW

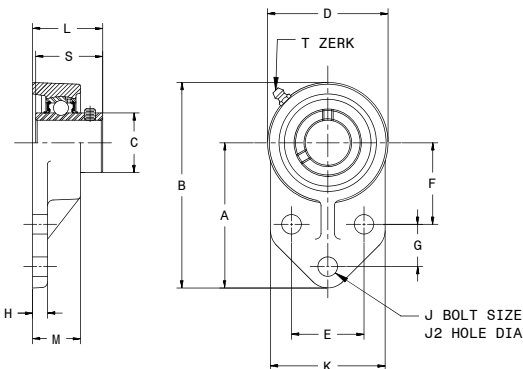
Three-Bolt Flange Bracket Bearings

Series FR250URW

Features

- Reliable Performance
- Economical Durability
- Cast Iron Housings
- Wide Inner Race
- Self Aligning Replaceable Bearing
- Setscrew Lock Inserts
- Pre-lubricated with Lithium Grease
- Steel Retainers
- Anti-rotation pins
- Nitrile Rubber Seals with Steel Flingers
- Precision Bored Housings

FR250URW DURALINE 3-BOLT FLANGE BRACKET



200 SERIES - 3 BOLT FLANGE BRACKETS - CAST IRON - SETSCREW LOCK - WIDE INNER RING								
FR250URW								
SHAFT SIZE	A	B	C	D	E	F	G	H
1/2, 5/8, 3/4, 20mm	3.000	4.250	1.142	2.500	1.500	1.688	0.875	0.310
7/8, 1, 25mm	3.380	4.750	1.339	2.750	1.625	1.812	1.125	0.380
1-1/8, 1-3/16, 1-1/4s, 30mm	3.750	5.380	1.591	3.250	1.875	2.063	1.250	0.380
1-1/4, 1-3/8, 1-7/16, 35mm	4.250	6.120	1.866	3.750	2.000	2.375	1.250	0.500
1-1/2, 40mm	4.500	6.440	2.075	3.940	2.000	2.375	1.625	0.630
1-5/8, 1-11/16, 1-3/4, 45mm	4.750	6.870	2.248	4.180	2.125	2.562	4.688	0.720
1-15/16, 2S, 50mm	5.180	7.500	2.465	4.650	2.750	2.937	1.625	0.500



200 SERIES - 3 BOLT FLANGE BRACKETS - CAST IRON - SETSCREW LOCK - WIDE INNER RING							
FR250URW							
SHAFT SIZE	J	J2	K	L	M	S	WT LBS
1/2, 5/8, 3/4, 20mm	0.375	0.394	2.380	1.343	1.000	1.220	1.5
7/8, 1, 25mm	0.375	0.394	2.500	1.437	1.120	1.338	1.9
1-1/8, 1-3/16, 1-1/4s, 30mm	0.375	0.394	2.750	1.610	1.250	1.500	2.2
1-1/4, 1-3/8, 1-7/16, 35mm	0.500	0.551	3.250	1.827	1.440	1.689	3.6
1-1/2, 40mm	0.500	0.551	3.060	2.016	1.410	1.937	4.6
1-5/8, 1-11/16, 1-3/4, 45mm	0.500	0.551	3.130	2.016	1.500	1.937	5.0
1-15/16, 2S, 50mm	0.500	0.551	4.000	2.110	1.500	2.031	5.7

For Load Ratings, See Page N-3

Dimensions shown are for reference only.

T-Zerk: 1/4-28 Taper

To order, specify type and bore size. Example: FR250URW x 1-7/16

For replacement inserts, use B250RW

DOWNLOAD AVAILABLE CAD MODELS AT: WWW.HUBCITYINC.COM

Certified prints are available upon request

EMAIL: hubsales@regalbeloit.com • www.hubcityinc.com



Hub City DuraLine™ Bearing Units

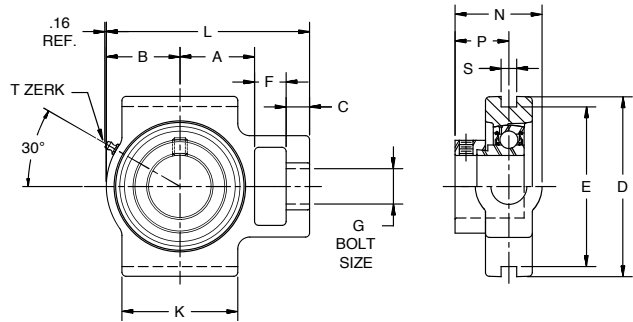
Standard Slot Take-Up Units

Series TU220UR, TU250UR

TU220UR Standard Slot Take-Up Units

Features

- Relube type. Prelubricated at factory
- Eccentric locking collar
- Self-aligning replaceable bearing
- Nitrile rubber seals with steel trash guard
- Precision bored Cast Iron housing



NOTE: BEARINGS WITH ECCENTRIC LOCKING COLLARS ARE NOT RECOMMENDED FOR USE IN REVERSING APPLICATIONS.

SHAFT SIZE	USE WITH FRAME NO. ★	DIMENSIONS													WT. LBS.
		A	B	C	D	E	F	G	J	K	L	N	P	S§	
3/4	3 thru 9T200BC	1.290	1.260	0.400	3.500	3.000	0.630	0.750	1.890	1.730	3.930	1.680	0.945	0.311	1.6
7/8, 1	3 thru 9T200BC	1.290	1.380	0.400	3.500	3.000	0.630	0.750	1.890	1.930	4.050	1.660	0.925	0.311	1.9
1-1/8, 1-3/16, 1-1/4S	3 thru 12T200DE	1.610	1.580	0.510	4.020	3.504	0.750	0.870	2.130	2.360	4.680	1.900	1.091	0.311	2.5
1-1/4, 1-3/8, 1-7/16	3 thru 12T200DE	1.690	1.700	0.510	4.020	3.504	0.750	0.870	2.130	2.640	5.000	2.010	1.197	0.311	2.9
1-1/2	3 thru 18T200FH	1.890	1.890	0.630	4.490	4.000	0.750	1.140	2.640	2.950	5.470	2.270	1.366	0.311	4.1
1-5/8, 1-3/4, 1-11/16	3 thru 18T200FH	2.050	2.040	0.630	4.490	4.000	0.750	1.140	2.640	3.110	5.780	2.250	1.346	0.311	4.6
1-15/16, 2S	3 thru 18T200FH	2.200	2.170	0.630	4.490	4.000	0.750	1.140	2.640	3.310	6.060	2.230	1.327	0.311	4.6
2, 2-3/16	9 thru 18T200JK	2.380	2.370	0.750	5.750	5.126	1.000	1.380	3.270	3.700	6.810	2.550	1.492	0.311	8.3
2-1/4, 2-7/16	9 thru 18T200JK	2.700	2.870	0.750	5.750	5.126	1.000	1.380	3.270	4.060	7.670	2.570	1.504	0.311	8.6

Part Numbers are specified by "TU220UR" and Bore Size. Example: TU220UR x 1-1/2.

★ Take-Up Frames shown on page M-33.

§ Take-Up Units with wider slots are shown on page N-20.

T-Zerk: 1/4-28 Taper

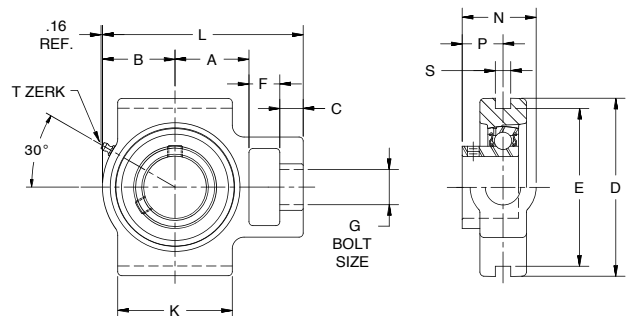
For Load Ratings, see page N-3.

For replacement inserts use B220R Bearing Inserts

TU250UR Standard Slot Take-Up Units

Features

- Relube type. Prelubricated at factory
- Setscrew locking
- Self-aligning replaceable bearing
- Nitrile rubber seals with steel trash guard
- Precision bored Cast Iron housing



SHAFT SIZE	USE WITH FRAME NO. ★	DIMENSIONS													WT. LBS.
		A	B	C	D	E	F	G	J	K	L	N	P	S§	
3/4	3 thru 9T200BC	1.290	1.260	0.400	3.500	3.000	0.630	0.750	1.890	1.730	3.930	1.440	0.709	0.311	1.6
7/8, 1	3 thru 9T200BC	1.290	1.380	0.400	3.500	3.000	0.630	0.750	1.890	1.930	4.050	1.500	0.768	0.311	1.9
1-1/8, 1-3/16, 1-1/4S	3 thru 12T200DE	1.610	1.580	0.510	4.020	3.504	0.750	0.870	2.130	2.360	4.680	1.680	0.866	0.311	2.5
1-1/4, 1-3/8, 1-7/16	3 thru 12T200DE	1.690	1.700	0.510	4.020	3.504	0.750	0.870	2.130	2.640	5.000	1.740	0.925	0.311	2.9
1-1/2	3 thru 18T200FH	1.890	1.890	0.630	4.490	4.000	0.750	1.140	2.640	2.950	5.470	3.170	0.984	0.311	4.1
1-5/8, 1-3/4, 1-11/16	3 thru 18T200FH	2.050	2.040	0.630	4.490	4.000	0.750	1.140	2.640	3.110	5.780	2.130	1.220	0.311	4.6
1-15/16, 2S	3 thru 18T200FH	2.200	2.170	0.630	4.490	4.000	0.750	1.140	2.640	3.310	6.060	2.190	1.283	0.311	4.6
2, 2-3/16	9 thru 18T200JK	2.380	2.370	0.750	5.750	5.126	1.000	1.380	3.270	3.700	6.810	2.380	1.319	0.311	8.3
2-1/4, 2-7/16	9 thru 18T200JK	2.700	2.870	0.750	5.750	5.126	1.000	1.380	3.270	4.060	7.670	2.590	1.528	0.311	8.6

Part Numbers are specified by "TU250UR" and Bore Size. Example: TU250UR x 1-1/2

★ Take-Up Frames shown on page M-33.

§ Take-Up Units with wider slots are shown on page N-20.

T-Zerk: 1/4-28 Taper

For Load Ratings, see page N-3.

For replacement inserts use B250R Bearing Inserts

Dimensions shown are for reference only.

DOWNLOAD AVAILABLE CAD MODELS AT: WWW.HUBCITYINC.COM

Certified prints are available upon request

CALL: (605) 225-0360 • FAX: (605) 225-0567

Hub City DuraLine™ Bearing Units

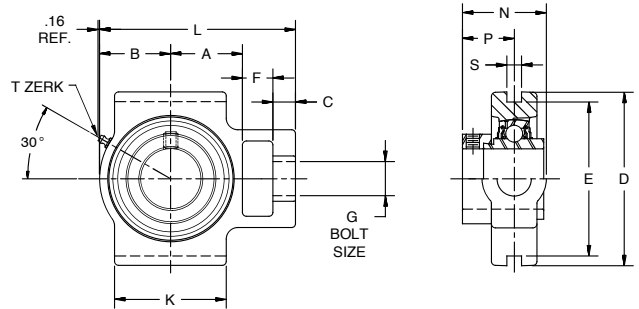
Standard Slot Take-Up Units

Series TU220URW, TU250URW

TU220URW Standard Slot Take-Up Units

Features

- Relube type. Pre-lubricated at factory
- Eccentric locking collar
- Self-aligning replaceable bearing
- Nitrile rubber seals with steel trash guard
- Precision bored Cast Iron housing
- Wide inner race



NOTE: BEARINGS WITH ECCENTRIC LOCKING COLLARS ARE NOT RECOMMENDED FOR USE IN REVERSING APPLICATIONS.

SHAFT SIZE	USE WITH FRAME NO. ★	DIMENSIONS													WT. LBS.
		A	B	C	D	E	F	G	J	K	L	N	P	S§	
3/4	3 thru 9T200BC	1.290	1.260	0.400	3.500	3.000	0.630	0.750	1.890	1.730	3.930	1.780	1.049	0.311	1.6
7/8, 1	3 thru 9T200BC	1.290	1.380	0.400	3.500	3.000	0.630	0.750	1.890	1.930	4.050	1.790	1.061	0.311	1.9
1-1/8, 1-3/16, 1-1/4S	3 thru 12T200DE	1.610	1.580	0.510	4.020	3.504	0.630	0.870	2.130	2.360	4.680	2.000	1.187	0.311	2.5
1-1/4, 1-3/8, 1-7/16	3 thru 12T200DE	1.690	1.700	0.510	4.020	3.504	0.750	0.870	2.130	2.640	5.000	2.080	1.274	0.311	2.9
1-1/2	3 thru 18T200FH	1.890	1.890	0.630	4.490	4.000	0.750	1.140	2.640	2.950	5.470	2.280	1.376	0.311	4.1
1-5/8, 1-3/4, 1-11/16	3 thru 18T200FH	2.050	2.040	0.630	4.490	4.000	0.750	1.140	2.640	3.110	5.780	2.280	1.376	0.311	4.6
1-15/16, 2S	3 thru 18T200FH	2.200	2.170	0.630	4.490	4.000	0.750	1.140	2.640	3.310	6.060	2.410	1.500	0.311	4.6
2, 2-3/16	9 thru 18T200JK	2.380	2.370	0.750	5.750	5.126	1.000	1.380	3.270	3.700	6.810	2.780	1.717	0.311	8.3
2-1/4, 2-7/16	9 thru 18T200JK	2.700	2.870	0.750	5.750	5.126	1.000	1.380	3.270	4.060	7.670	2.910	1.844	0.311	8.6

Part Numbers are specified by "TU220URW" and Bore Size. Example: TU220URW x 1-1/2.

★ Take-Up Frames shown on page M-33.

§ Take-Up Units with wider slots are shown on page N-21.

T-Zerk: 1/4-28 Taper

For Load Ratings, see page N-3

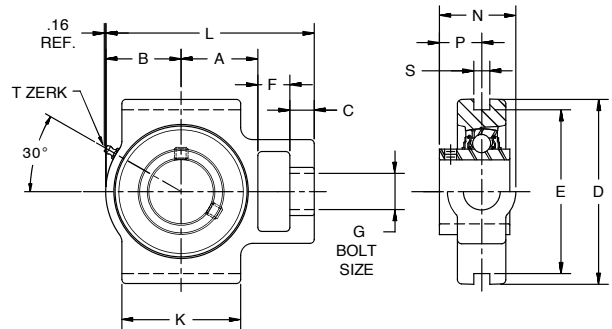
Bearing protrudes beyond edge of housing

For replacement inserts, use B220RW

TU250URW Standard Slot Take-Up Units

Features

- Relube type. Pre-lubricated at factory
- Setscrew locking
- Self-aligning replaceable bearing
- Nitrile rubber seals with steel trash guard
- Precision bored Cast Iron housing
- Wide inner race



SHAFT SIZE	USE WITH FRAME NO. ★	DIMENSIONS													WT. LBS.
		A	B	C	D	E	F	G	J	K	L	N	P	S§	
3/4, 20mm	3 thru 9T200BC	1.290	1.260	0.400	3.500	3.000	0.630	0.750	1.890	1.730	3.930	1.450	0.720	0.311	1.6
7/8, 1, 25mm	3 thru 9T200BC	1.290	1.380	0.400	3.500	3.000	0.630	0.750	1.890	1.930	4.050	1.500	0.776	0.311	1.9
1-1/8, 1-3/16, 1-1/4S, 30mm	3 thru 12T200DE	1.610	1.580	0.510	4.020	3.504	0.630	0.870	2.130	2.360	4.680	1.680	0.874	0.311	2.5
1-1/4, 1-3/8, 1-7/16, 35mm	3 thru 12T200DE	1.690	1.700	0.510	4.020	3.504	0.750	0.870	2.130	2.640	5.000	1.810	1.000	0.311	2.9
1-1/2, 40mm	3 thru 18T200FH	1.890	1.890	0.630	4.490	4.000	0.750	1.140	2.640	2.950	5.470	2.100	1.189	0.311	4.1
1-5/8, 1-3/4, 1-11/16, 45mm	3 thru 18T200FH	2.050	2.040	0.630	4.490	4.000	0.750	1.140	2.640	3.110	5.780	2.100	1.189	0.311	4.6
1-15/16, 2S, 50mm	3 thru 18T200FH	2.200	2.170	0.630	4.490	4.000	0.750	1.140	2.640	3.310	6.060	2.190	1.283	0.311	4.6
2, 2-3/16, 55mm	9 thru 18T200JK	2.380	2.370	0.750	5.750	5.126	1.000	1.380	3.270	3.700	6.810	2.380	1.315	0.311	8.3
2-1/4, 2-7/16, 60mm	9 thru 18T200JK	2.700	2.870	0.750	5.750	5.126	1.000	1.380	3.270	4.060	7.670	2.630	1.563	0.311	8.6

Part Numbers are specified by "TU250URW" and Bore Size. Example: TU250URW x 1-1/2.

★ Take-Up Frames shown on page M-33.

§ Take-Up Units with wider slots are shown on page N-21.

T-Zerk: 1/4-28 Taper

For Load Ratings, see page N-3

For replacement inserts use B250RW Bearing Inserts

Dimensions shown are for reference only.

DOWNLOAD AVAILABLE CAD MODELS AT: WWW.HUBCITYINC.COM

Certified prints are available upon request

EMAIL: hubsales@regalbeloit.com • www.hubcityinc.com



Hub City DuraLine™ Bearing Units

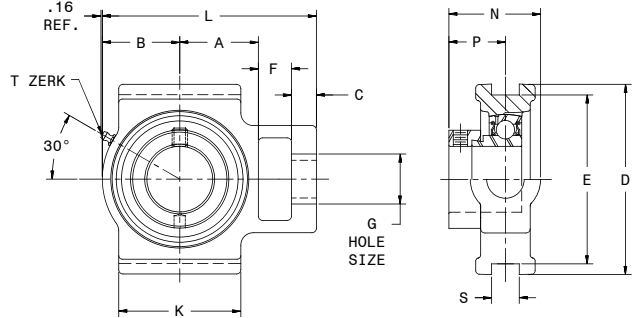
Wide Slot Take-Up Units

Series WSTU220UR, WSTU250UR

WSTU220UR Wide Slot Take-Up Units

Features

- Relube type. Prelubricated at factory
- Eccentric locking collar
- Self-aligning replaceable bearing
- Nitrile rubber seals with steel trash guard
- Precision bored Cast Iron housing



NOTE: BEARINGS WITH ECCENTRIC LOCKING COLLARS ARE NOT RECOMMENDED FOR USE IN REVERSING APPLICATIONS.

SHAFT SIZE	USE WITH FRAME NO. ★	DIMENSIONS														WT. LBS.
		A	B	C	D	E	F	G	J	K	L	N	P	§§		
3/4	3 Thru 9TWS200BC	1.330	1.340	0.400	3.500	3.000	0.630	0.750	2.000	2.000	3.860	1.580	0.945	0.531	1.6	
7/8, 1	3 Thru 9TWS200BC	1.410	1.380	0.400	3.500	3.000	0.630	0.750	2.000	2.000	3.980	1.560	0.925	0.531	1.9	
1-1/8, 1-3/16, 1-1/4S	3 Thru 12TWS200DE	1.730	1.690	0.400	4.020	3.504	0.750	0.870	2.200	2.250	4.610	1.820	1.091	0.531	2.5	
1-1/4, 1-3/8, 1-7/16	3 Thru 12TWS200DE	1.930	2.010	0.510	4.020	3.504	0.750	0.870	2.520	2.520	5.240	2.660	1.197	0.531	2.9	
1-1/2	3 Thru 18TWS200FH	2.120	2.170	0.630	4.490	4.000	0.750	1.140	3.270	3.270	5.830	2.330	1.366	0.689	4.1	
1-5/8, 1-3/4, 1-11/16	3 Thru 18TWS200FH	2.050	2.240	0.630	4.490	4.000	0.750	1.140	3.270	3.270	5.830	2.310	1.346	0.689	4.6	
1-15/16, 2S	3 Thru 18TWS200FH	2.160	2.330	0.630	4.490	4.000	0.750	1.140	3.270	3.380	6.030	2.290	1.327	0.689	4.8	
2, 2-3/16	9 Thru 18TWS200JK	2.440	2.560	0.750	5.750	5.126	0.980	1.380	4.020	3.740	6.890	2.750	1.492	1.063	8.3	
2-1/4, 2-7/16	9 Thru 18TWS200JK	2.680	2.950	0.750	5.750	5.126	1.260	1.380	4.020	4.020	7.800	2.770	1.504	1.063	8.8	

Part Numbers are specified by "WSTU220UR" and Bore Size. Example: WSTU220UR x 3/4.

★ Take-Up Frames shown on page M-34.

§ Take-Up Units with narrower slots are shown on page N-18.

T-Zerk: 1/4-28 Taper

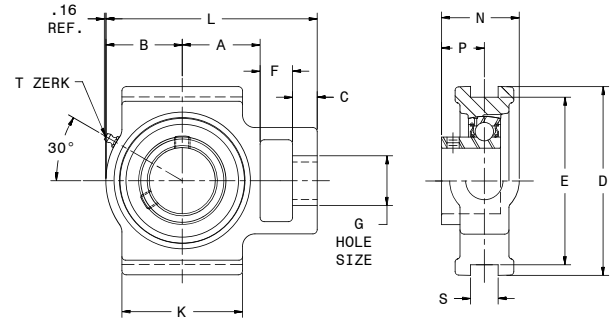
For Load Ratings, see page N-3

For replacement inserts use B220R Bearing Inserts

WSTU250UR Wide Slot Take-Up Units

Features

- Relube type. Prelubricated at factory
- Setscrew locking
- Self-aligning replaceable bearing
- Nitrile rubber seals with steel trash guard
- Precision bored Cast Iron housing



SHAFT SIZE	USE WITH FRAME NO. ★	DIMENSIONS														WT. LBS.
		A	B	C	D	E	F	G	J	K	L	N	P	§§		
3/4	3 Thru 9TWS200BC	1.330	1.340	0.400	3.500	3.000	0.630	0.750	2.000	2.000	3.860	1.340	0.709	0.531	1.6	
7/8, 1	3 Thru 9TWS200BC	1.410	1.380	0.400	3.500	3.000	0.630	0.750	2.000	2.000	3.980	1.400	0.768	0.531	1.9	
1-1/8, 1-3/16, 1-1/4S	3 Thru 12TWS200DE	1.730	1.690	0.400	4.020	3.504	0.750	0.870	2.200	2.250	4.610	1.600	0.866	0.531	2.5	
1-1/4, 1-3/8, 1-7/16	3 Thru 12TWS200DE	1.930	2.010	0.510	4.020	3.504	0.750	0.870	2.520	2.520	5.240	1.660	0.925	0.531	2.9	
1-1/2	3 Thru 18TWS200FH	2.120	2.170	0.630	4.490	4.000	0.750	1.140	3.270	3.270	5.830	1.950	0.984	0.689	4.1	
1-5/8, 1-3/4, 1-11/16	3 Thru 18TWS200FH	2.050	2.240	0.630	4.490	4.000	0.750	1.140	3.270	3.270	5.830	2.140	1.220	0.689	4.6	
1-15/16, 2S	3 Thru 18TWS200FH	2.160	2.330	0.630	4.490	4.000	0.750	1.140	3.270	3.380	6.030	2.200	1.283	0.689	4.8	
2, 2-3/16	9 Thru 18TWS200JK	2.440	2.560	0.750	5.750	5.126	0.980	1.380	4.020	3.740	6.890	2.580	1.319	1.063	8.3	
2-1/4, 2-7/16	9 Thru 18TWS200JK	2.680	2.950	0.750	5.750	5.126	1.260	1.380	4.020	4.020	7.800	2.910	1.528	1.063	8.8	

Part Numbers are specified by "WSTU250UR" and Bore Size. Example: WSTU250UR x 3/4.

★ Take-Up Frames shown on page M-34.

§ Take-Up Units with narrower slots are shown on page N-18.

T-Zerk: 1/4-28 Taper

For replacement inserts use B250R Bearing Inserts

For Load Ratings, see page N-3

Dimensions shown are for reference only.

DOWNLOAD AVAILABLE CAD MODELS AT: WWW.HUBCITYINC.COM

Certified prints are available upon request

CALL: (605) 225-0360 • FAX: (605) 225-0567

Hub City DuraLine™ Bearing Units

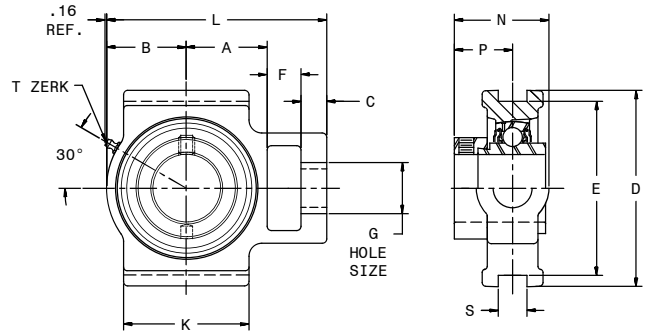
Wide Slot Take-Up Units

Series WSTU220URW, WSTU250URW

WSTU220URW Wide Slot Take-Up Units

Features

- Relube type. Prelubricated at factory
- Eccentric locking collar
- Self-aligning replaceable bearing
- Nitrile rubber seals with steel trash guard
- Precision bored Cast Iron housing



NOTE: BEARINGS WITH ECCENTRIC LOCKING COLLARS ARE NOT RECOMMENDED FOR USE IN REVERSING APPLICATIONS.

SHAFT SIZE	USE WITH FRAME NO. ★	DIMENSIONS													WT. LBS.
		A	B	C	D	E	F	G	J	K	L	N	P	§§	
3/4	3 Thru 9TWS200BC	1.330	1.340	0.400	3.500	3.000	0.630	0.750	2.000	2.000	3.860	1.680	1.049	0.531	1.6
7/8, 1	3 Thru 9TWS200BC	1.410	1.380	0.400	3.500	3.000	0.630	0.750	2.000	2.000	3.980	1.690	1.061	0.531	1.9
1-1/8, 1-3/16, 1-1/4S	3 Thru 12TWS200DE	1.730	1.690	0.400	4.020	3.504	0.750	0.870	2.200	2.250	4.610	1.920	1.187	0.531	2.5
1-1/4, 1-3/8, 1-7/16	3 Thru 12TWS200DE	1.930	2.010	0.510	4.020	3.504	0.750	0.870	2.520	2.520	5.240	2.000	1.274	0.531	2.9
1-1/2	3 Thru 18TWS200FH	2.120	2.170	0.630	4.490	4.000	0.750	1.140	3.270	3.270	5.830	2.340	1.376	0.689	4.1
1-5/8, 1-3/4, 1-11/16	3 Thru 18TWS200FH	2.050	2.240	0.630	4.490	4.000	0.750	1.140	3.270	3.270	5.830	2.340	1.376	0.689	4.6
1-15/16, 2S	3 Thru 18TWS200FH	2.160	2.330	0.630	4.490	4.000	0.750	1.140	3.270	3.380	6.030	2.470	1.500	0.689	4.8
2, 2-3/16	9 Thru 18TWS200JK	2.440	2.560	0.750	5.750	5.126	0.980	1.380	4.020	3.740	6.890	2.980	1.717	1.063	8.3
2-1/4, 2-7/16	9 Thru 18TWS200JK	2.680	2.950	0.750	5.750	5.126	1.260	1.380	4.020	4.020	7.800	3.110	1.844	1.063	8.8

Part Numbers are specified by "WSTU220URW" and Bore Size. Example: WSTU220URW x 3/4.

★ Take-Up Frames shown on page M-34.

§ Take-Up Units with narrower slots are shown on page N-19.

For Load Ratings, see page N-3.

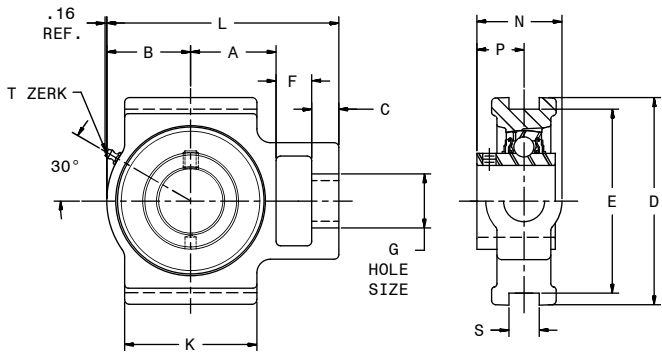
T-Zerk: 1/4-28 Taper

For replacement inserts, use B220RW

WSTU250URW Wide Slot Take-Up Units

Features

- Relube type. Prelubricated at factory
- Setscrew locking
- Self-aligning replaceable bearing
- Nitrile rubber seals with steel trash guard
- Precision bored Cast Iron housing



SHAFT SIZE	USE WITH FRAME NO. ★	DIMENSIONS													WT. LBS.
		A	B	C	D	E	F	G	J	K	L	N	P	§§	
3/4, 20mm	3 Thru 9TWS200BC	1.330	1.340	0.400	3.500	3.000	0.630	0.750	2.000	2.000	3.860	1.350	0.720	0.531	1.6
7/8, 1, 25mm	3 Thru 9TWS200BC	1.410	1.380	0.400	3.500	3.000	0.630	0.750	2.000	2.000	3.980	1.410	0.776	0.531	1.9
1-1/8, 1-3/16, 1-1/4S, 30mm	3 Thru 12TWS200DE	1.730	1.690	0.400	4.020	3.504	0.750	0.870	2.200	2.250	4.610	1.600	0.874	0.531	2.5
1-1/4, 1-3/8, 1-7/16, 35mm	3 Thru 12TWS200DE	1.930	2.010	0.510	4.020	3.504	0.750	0.870	2.520	2.520	5.240	1.730	1.000	0.531	2.9
1-1/2, 40mm	3 Thru 18TWS200FH	2.120	2.170	0.630	4.490	4.000	0.750	1.140	3.270	3.270	5.830	2.150	1.189	0.689	4.1
1-5/8, 1-3/4, 1-11/16, 45mm	3 Thru 18TWS200FH	2.050	2.240	0.630	4.490	4.000	0.750	1.140	3.270	3.270	5.830	2.150	1.189	0.689	4.6
1-15/16, 2S, 50mm	3 Thru 18TWS200FH	2.160	2.330	0.630	4.490	4.000	0.750	1.140	3.270	3.380	6.030	2.250	1.283	0.689	4.8
2, 2-3/16, 55mm	9 Thru 18TWS200JK	2.440	2.560	0.750	5.750	5.126	0.980	1.380	4.020	3.740	6.890	2.580	1.315	1.063	8.3
2-1/4, 2-7/16, 60mm	9 Thru 18TWS200JK	2.680	2.950	0.750	5.750	5.126	1.260	1.380	4.020	4.020	7.800	2.820	1.563	1.063	8.8

Part Numbers are specified by "WSTU250URW" and Bore Size.

Example: WSTU250 x 3/4.

★ Take-Up Frames shown on page M-34.

§ Take-Up Units with narrower slots are shown on page N-19.

T-Zerk: 1/4-28 Taper

For Load Ratings, see page N-3

For replacement inserts, use B250RW

Dimensions shown are for reference only.

DOWNLOAD AVAILABLE CAD MODELS AT: WWW.HUBCITYINC.COM

Certified prints are available upon request

EMAIL: hubsales@regalbeloit.com • www.hubcityinc.com



Hub City DuraLine™ Bearing Units

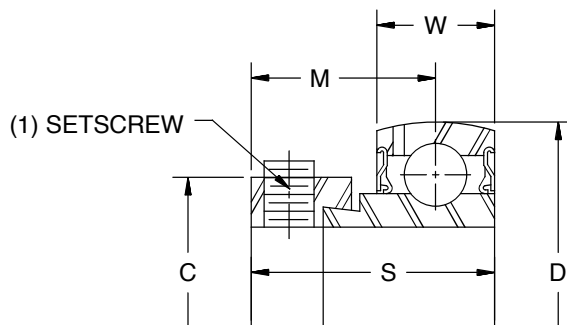
Bearing Inserts

Series B220R, B250R

B220R Bearing Inserts

Features

- Spherical outside diameter
- Relube type. Prelubricated at factory
- Steel retainer
- Nitrile rubber seals with steel trash guard
- Eccentric locking collar



NOTE: BEARINGS WITH ECCENTRIC LOCKING COLLARS ARE NOT RECOMMENDED FOR USE IN REVERSING APPLICATIONS.

SHAFT SIZE	DIMENSIONS						WT. LBS.
	C	D	M	S	W	SETSCREW	
1/2, 5/8	1.102	1.5748	0.889	1.126	0.472	1/4 - 28 UNF	0.2
3/4	1.299	1.8504	0.945	1.220	0.551	1/4 - 28 UNF	0.3
7/8, 1	1.476	2.0472	0.925	1.220	0.591	1/4 - 28 UNF	0.4
1-1/8, 1-3/16, 1-1/4S	1.732	2.4409	1.091	1.406	0.629	1/4 - 28 UNF	0.6
1-1/4, 1-3/8, 1-7/16	2.165	2.8346	1.197	1.531	0.669	5/16 - 24 UNF	1.0
1-1/2	2.283	3.1496	1.366	1.720	0.709	5/16 - 24 UNF	1.3
1-5/8, 1-3/4, 1-11/16	2.480	3.3465	1.346	1.720	0.748	5/16 - 24 UNF	1.6
1-7/8, 1-15/16, 2S	2.717	3.5433	1.327	1.720	0.787	3/8 - 24 UNF	1.7
2, 2-3/16	2.992	3.9370	1.492	1.906	0.827	3/8 - 24 UNF	2.4
2-1/4, 2-7/16	3.311	4.3307	1.504	1.937	0.866	3/8 - 24 UNF	3.0

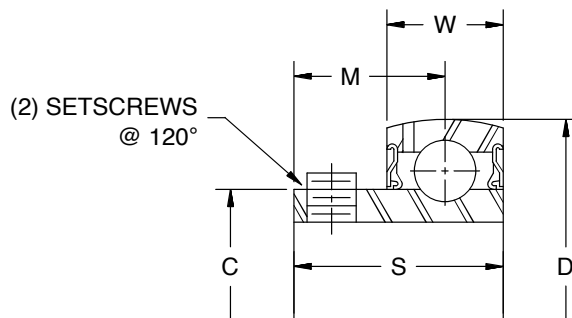
Part Numbers are specified by "B220R" and Bore Size. Example B220R x 1-1/4.

Used in PB220UR, PB221UR Pillow Blocks; FB220UR, FB230UR Flange Blocks; and TU220UR, WSTU220UR Take-Up Units.

B250R Bearing Inserts

Features

- Spherical outside diameter
- Relube type. Prelubricated at factory
- Steel retainer
- Nitrile rubber seals with steel trash guard
- Setscrew Locking



SHAFT SIZE	DIMENSIONS						WT. LBS.
	C	D	M	S	W	SETSCREW	
1/2, 5/8	0.921	1.5748	0.629	0.866	0.472	1/4 - 28 UNF	0.2
3/4	1.142	1.8504	0.709	0.984	0.551	1/4 - 28 UNF	0.3
7/8, 1	1.339	2.0472	0.768	1.063	0.591	1/4 - 28 UNF	0.4
1-1/8, 1-3/16, 1-1/4S	1.587	2.4409	0.866	1.181	0.629	1/4 - 28 UNF	0.6
1-1/4, 1-3/8, 1-7/16	1.889	2.8346	0.925	1.259	0.669	5/16 - 24 UNF	1.0
1-1/2	2.087	3.1496	0.984	1.339	0.709	5/16 - 24 UNF	1.3
1-5/8, 1-3/4, 1-11/16	2.252	3.3465	1.220	1.622	0.748	5/16 - 24 UNF	1.6
1-7/8, 1-15/16, 2S	2.433	3.5433	1.283	1.713	0.787	3/8 - 24 UNF	1.7
2, 2-3/16	2.717	3.9370	1.319	1.783	0.827	3/8 - 24 UNF	2.4
2-1/4, 2-7/16	2.949	4.3307	1.528	2.114	0.866	3/8 - 24 UNF	3.0

Part Numbers are specified by "B250R" and Bore Size. Example B250R x 1-1/4.

Used in PB100UR, PB100URL, PB150UR, PB150URL, PB250UR, PB251UR, TPB250UR Pillow Blocks; FB100UR, FB110UR, FB150UR, FB160UR, FB250UR, FB260UR Flange Blocks; and TU250UR, WSTU250UR Take-Up Units.

Dimensions shown are for reference only.

DOWNLOAD AVAILABLE CAD MODELS AT: WWW.HUBCITYINC.COM

Certified prints are available upon request

CALL: (605) 225-0360 • FAX: (605) 225-0567

Hub City DuraLine™ Bearing Units

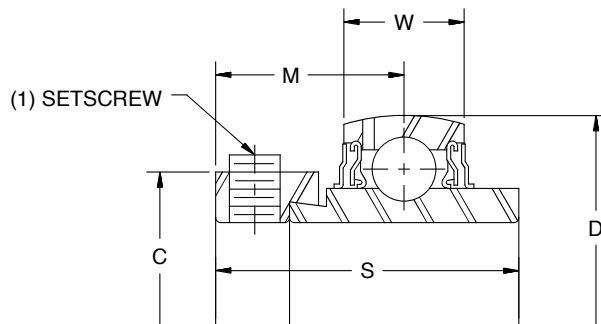
Bearing Inserts

Series B220RW, B250RW

B220RW Bearing Inserts

Features

- Spherical outside diameter
- Relube type. Prelubricated at factory
- Steel retainer
- Nitrile rubber seals with steel trash guard
- Metal flingers
- Eccentric locking collar
- Wide inner race



SHAFT SIZE	DIMENSIONS						WT. LBS.
	C	D	M	S	W	SETSCREW	
3/4	1.299	1.8504	1.049	1.720	0.629	1/4 - 28 UNF	0.3
7/8, 1	1.476	2.0472	1.061	1.748	0.669	1/4 - 28 UNF	0.4
1-1/8, 1-3/16, 1-1/4S	1.732	2.4409	1.187	1.906	0.748	5/16 - 24 UNF	0.6
1-1/4, 1-3/8, 1-7/16	2.165	2.8346	1.274	2.016	0.787	5/16 - 24 UNF	1.0
1-1/2	2.283	3.1496	1.376	2.220	0.827	5/16 - 24 UNF	1.3
1-5/8, 1-3/4, 1-11/16	2.480	3.3465	1.376	2.220	0.866	5/16 - 24 UNF	1.6
1-7/8, 1-15/16, 2S	2.717	3.5433	1.500	2.469	0.906	5/16 - 24 UNF	1.7
2, 2-3/16	2.992	3.9370	1.717	2.811	0.984	3/8 - 24 UNF	2.4
2-1/4, 2-7/16	3.311	4.3307	1.844	3.063	1.063	3/8 - 24 UNF	3.0

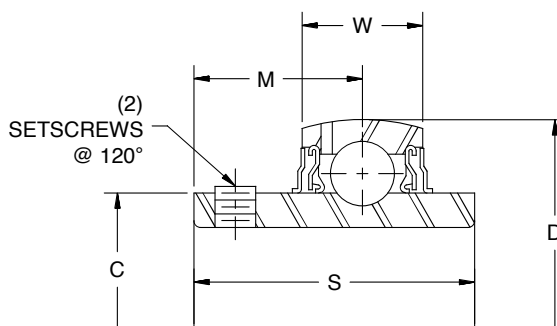
Part Numbers are specified by "B220RW" and Bore Size. Example B220RW x 1-1/4.

Used in PB220DRW, PB221DRW, TPB220URW Pillow Blocks; FB230DRW, FB220DRW Flange Blocks; and TU220URW, WSTU220URW Take-Up Units.

B250RW Bearing Inserts

Features

- Spherical outside diameter
- Relube type. Prelubricated at factory
- Steel retainer
- Nitrile rubber seals with steel trash guard
- Metal flingers
- Setscrew locking
- Wide inner race



SHAFT SIZE	DIMENSIONS						WT. LBS.
	C	D	M	S	W	SETSCREW	
1/2L, 5/8L, 3/4, 20mm	1.142	1.8504	0.720	1.220	0.629	1/4 - 28 UNF	0.3
7/8, 1, 25mm	1.339	2.0472	0.776	1.339	0.669	1/4 - 28 UNF	0.4
1-1/8, 1-3/16, 1-1/4S, 30mm	1.591	2.4409	0.874	1.500	0.748	1/4 - 28 UNF	0.6
1-1/4, 1-3/8, 1-7/16, 35mm	1.866	2.8346	1.000	1.689	0.787	5/16 - 24 UNF	1.0
1-1/2, 40mm	2.075	3.1496	1.189	1.937	0.827	5/16 - 24 UNF	1.3
1-5/8, 1-3/4, 1-11/16, 45mm	2.248	3.3465	1.189	1.937	0.866	5/16 - 24 UNF	1.6
1-7/8, 1-15/16, 2S, 50mm	2.465	3.5433	1.283	2.031	0.906	3/8 - 24 UNF	1.7
2, 2-3/16, 55mm	2.776	3.9370	1.315	2.189	0.984	3/8 - 24 UNF	2.4
2-1/4, 2-7/16, 60mm	3.059	4.3307	1.563	2.563	1.063	3/8 - 24 UNF	3.0
2-5/16	3.602	5.1181	1.752	3.063	1.181	7/16 - 20 UNF	4.9

Part Numbers are specified by "B250RW" and Bore Size. Example B250RW x 1-1/4.

Used in PB250DRW, PB251DRW, TPB250URW Pillow Blocks; FB260DRW, FB250DRW Flange Blocks; FC250URW Flange Cartridges; FR250URW Flange Brackets; and TU250URW, WSTU250URW Take-Up Units.

Dimensions shown are for reference only.

DOWNLOAD AVAILABLE CAD MODELS AT: WWW.HUBCITYINC.COM

Certified prints are available upon request

EMAIL: hubsales@regalbeloit.com • www.hubcityinc.com



Hub City DuraLine™ Bearing Units

Medium Duty

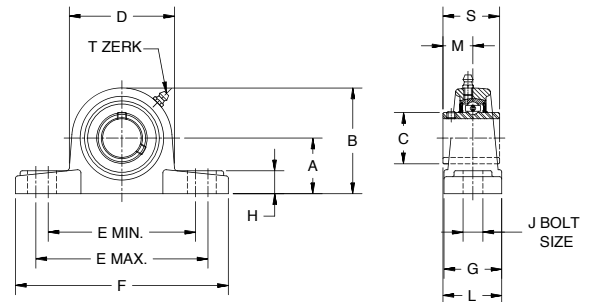
Pillow Block - PB350DRW

Features

- Ductile Iron Housing
- Self-aligning replaceable bearing
- Pre-lubricated with lithium grease
- Steel retainers
- Anti-rotation pins
- Nitrile rubber seals with steel trash guards
- Precision bored housings
- Higher strength and greater impact resistance than gray iron for high shock loads



300 SERIES PILLOW BLOCK



300 SERIES – PILLOW BLOCKS AND FLANGE BLOCKS – CAST IRON – SETSCREW LOCK														
PB350UR														
SHAFT SIZE	A	B	C	D	E MIN.	E MAX.	F	G	H	J	L	M	S	WT. LBS.
1	1.750	3.350	1.587	3.380	4.280	5.090	6.250	2.000	0.710	0.670	1.870	0.874	1.500	3.3
1-3/16, 1-1/4	1.875	3.700	1.890	3.810	4.600	5.400	6.880	2.250	0.790	0.670	2.120	1.000	1.937	4.0
1-3/8, 1-7/16	2.125	4.130	2.087	4.220	5.070	6.270	8.000	2.250	0.870	0.670	2.310	1.189	1.937	4.9
1-1/2	2.312	4.450	2.252	4.410	5.590	6.700	8.750	2.630	1.020	0.787	2.500	1.189	1.937	5.6
1-5/8, 1-3/4, 1-11/16	2.312	4.560	2.433	4.660	5.550	6.740	8.750	2.630	1.020	0.787	2.590	1.283	2.031	6.7
1-15/16, 2	2.500	4.960	2.717	5.130	6.020	7.440	9.500	2.880	1.060	0.787	2.750	1.315	2.189	8.5
2-3/16, 2-1/4	2.750	5.470	2.949	5.440	6.660	7.830	10.250	3.120	1.180	0.984	3.120	1.563	2.563	11.3
2-7/16, 2-1/2	3.000	6.060	3.406	6.090	7.210	8.770	11.250	3.250	1.260	0.984	3.380	1.748	2.937	15.2
2-11/16	3.500	6.770	3.602	6.560	7.960	10.070	13.000	3.500	1.380	1.063	3.500	1.752	3.063	17.9
2-15/16, 3	3.500	6.970	3.838	6.970	7.960	10.070	13.000	3.500	1.380	1.063	3.690	1.941	3.252	19.1
3-7/16, 3-1/2	4.000	7.950	4.370	7.560	9.770	12.510	15.000	4.000	1.650	1.063	4.217	2.217	3.780	28.4

To order, specify type and bore size. Example: PB350DRW x 1-7/16

For replacement inserts, use B350RW

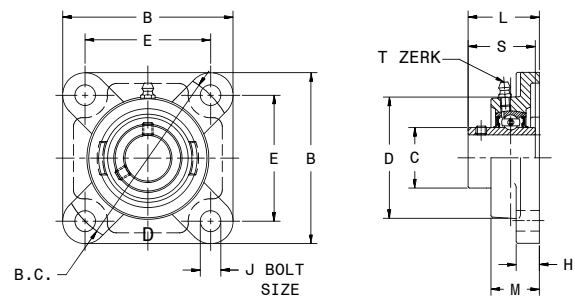
Flange Block - FB350DRW

Features

- Ductile Iron Housing
- Self-aligning replaceable bearing
- Pre-lubricated with lithium grease
- Steel retainers
- Anti-rotation pins
- Nitrile rubber seals with steel trash guards
- Precision bored housings
- Higher strength and greater impact resistance than gray iron for high shock loads



300 SERIES FLANGE BLOCK



FB350DRW												
SHAFT SIZE	B	B.C.	C	D	E	H	J	L	M	S	WT. LBS.	
1	4.250	4.596	1.587	3.190	3.250	0.510	0.472	1.583	1.180	1.500	3.0	
1-3/16, 1-1/4	4.610	5.125	1.890	3.620	3.625	0.560	0.630	1.748	1.340	1.937	4.2	
1-3/8, 1-7/16	5.120	5.656	2.087	4.090	4.000	0.560	0.630	2.016	1.500	1.937	5.4	
1-1/2	5.390	5.834	2.252	4.250	4.125	0.560	0.630	2.055	1.570	1.937	5.8	
1-5/8, 1-3/4, 1-11/16	5.630	6.187	2.433	4.450	4.375	0.560	0.630	2.189	1.570	2.031	7.0	
1-15/16, 2	6.380	7.250	2.717	4.920	5.125	0.790	0.748	2.339	1.730	2.189	9.2	
2-3/16, 2-1/4	6.890	7.954	2.949	5.310	5.625	0.790	0.748	2.705	1.930	2.563	12.1	
2-7/16, 2-1/2	7.360	8.308	3.406	6.100	5.875	0.830	0.748	3.087	2.320	2.937	15.4	
2-11/16	7.750	8.485	3.602	6.380	6.000	0.940	0.906	3.209	2.360	3.063	18.3	
2-15/16, 3	7.750	8.485	3.858	6.770	6.000	0.940	0.906	3.516	2.680	3.252	19.0	
3-7/16, 3-1/2	8.420	9.546	4.370	7.680	6.750	0.940	0.906	3.791	2.750	3.780	22.2	

DuraLine® Replacement Inserts Use B350RW
Dimensions shown are for reference only.

For Load Ratings, See Page N-3
T-Zerk: 1/4-28 Taper

To order, specify type and bore size.
Example: FB350DRW x 1-7/16

DOWNLOAD AVAILABLE CAD MODELS AT: WWW.HUBCITYINC.COM

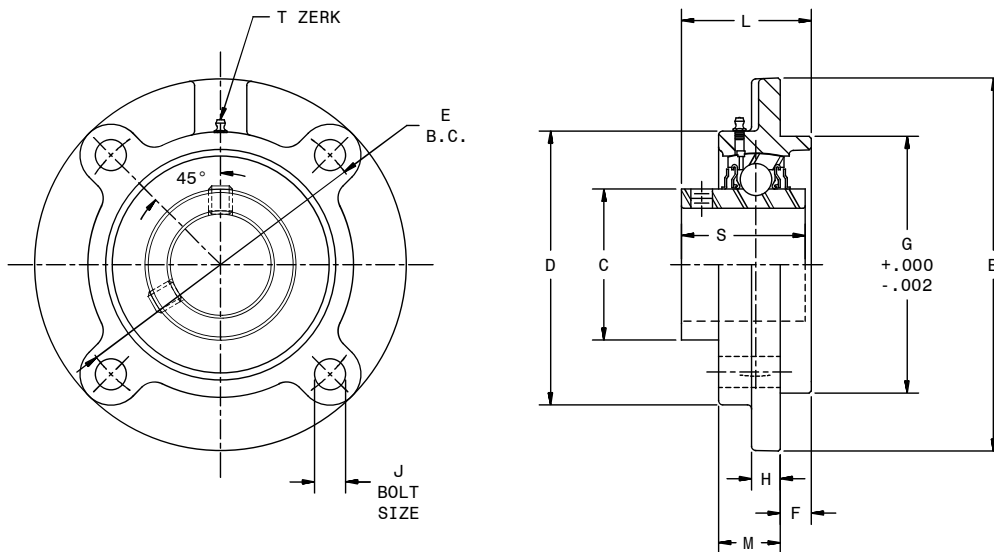
Certified prints are available upon request

CALL: (605) 225-0360 • FAX: (605) 225-0567

Hub City DuraLine™ Bearing Units

Cast Iron Flange Cartridge

Series FC350URW



Features

- Relube type. Prelubricated at factory
- Setscrew locking
- Self-aligning replacement bearing
- Nitrile rubber seals with steel trash guard
- Precision bored Cast Iron Housing
- Wide inner ring

SHAFT SIZE	DIMENSIONS											WT. LBS.
	B	C	D	E	F	G	H	J	L	M	S	
1	4.370	1.587	3.250	3.622	0.250	3.000	0.370	0.374	1.520	0.940	1.268	3.3
1-3/16, 1-1/4	5.000	1.890	3.620	4.134	0.370	3.374	0.370	0.472	1.680	0.870	1.315	3.3
1-3/8, 1-7/16	5.280	2.087	3.880	4.370	0.440	3.622	0.430	0.472	1.980	0.870	1.543	3.9
1-1/2	6.100	2.252	4.250	5.118	0.430	4.252	0.470	0.551	1.980	1.020	1.405	4.1
1-5/8, 1-3/4, 1-11/16	6.130	2.433	4.500	5.118	0.470	4.252	0.430	0.551	2.070	0.980	1.598	5.5
1-15/16, 2	6.380	2.717	4.880	5.394	0.630	4.500	0.510	0.551	2.140	0.980	1.590	6.1
2-3/16, 2-1/4	7.090	2.949	5.380	5.984	0.870	5.000	0.630	0.630	2.590	1.020	1.720	8.9
2-7/16, 2-1/2	7.640	3.406	6.000	6.496	0.780	5.500	0.560	0.630	2.960	1.300	2.181	11.3
2-11/16	8.740	3.602	6.380	7.500	0.780	6.378	0.560	0.748	3.080	1.420	2.303	15.4
2-15/16, 3	8.740	3.853	6.620	7.500	0.870	6.378	0.630	0.748	3.280	1.380	2.413	15.2
3-7/16, 3-1/2	10.240	4.370	7.500	8.622	1.000	7.374	0.750	0.906	3.610	1.420	2.610	22.5

Part Numbers are specified by "FC350" and Bore Size. Example: FC350URW x 1-1/2

For Load Ratings, see page N-3

T-Zerk: 1/4-28 Taper

For replacement inserts use B350RW Bearing Inserts

DOWNLOAD AVAILABLE CAD MODELS AT: WWW.HUBCITYINC.COM

Certified prints are available upon request

EMAIL: hubsales@regalbeloit.com • www.hubcityinc.com



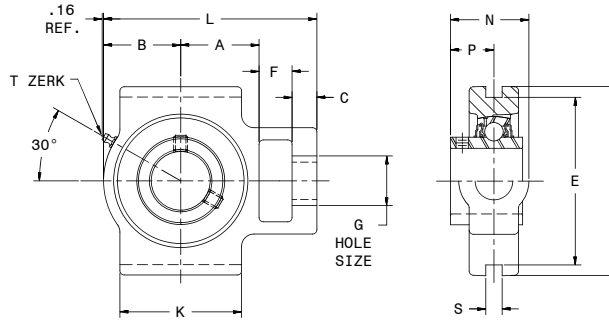
Hub City DuraLine™ Bearing Units

Medium Duty Take-Up Units

Series TU350URW

Features

- Relube type. Prelubricated at factory
- Setscrew locking
- Self-aligning replacement bearing
- Nitrile rubber seals with steel trash guard
- Precision bored Cast Iron housing



SHAFT SIZE	USE WITH FRAME NO. ★	DIMENSIONS													WT. LBS.
		A	B	C	D	E	F	G	J	K	L	N	P	S§	
1	3 Thru 12T200DE	1.610	1.580	0.510	4.020	3.504	0.630	0.870	2.130	2.360	4.680	1.680	0.874	0.311	3.0
1-3/16, 1-1/4	3 Thru 12T200DE	1.690	1.700	0.510	4.020	3.504	0.750	0.870	2.130	2.640	5.000	1.810	1.000	0.311	3.5
1-3/8, 1-7/16	3 Thru 18T200FH	1.890	1.850	0.630	4.490	4.000	0.750	1.140	2.640	2.950	5.470	2.100	1.189	0.311	4.0
1-1/2	3 Thru 18T200FH	2.050	2.000	0.630	4.490	4.000	0.750	1.140	2.640	3.110	5.780	2.100	1.189	0.311	4.8
1-5/8, 1-3/4, 1-11/16	3 Thru 18T200FH	2.200	2.130	0.630	4.490	4.000	0.750	1.140	2.640	3.310	6.060	2.190	1.283	0.311	6.8
1-15/16, 2	9 Thru 18T200JK	2.380	2.330	0.750	5.750	5.126	1.000	1.380	3.270	3.700	6.810	2.380	1.315	0.311	9.6
2-3/16, 2-1/4	9 Thru 18T200JK	2.380	2.870	0.750	5.750	5.126	1.000	1.380	3.270	4.060	7.670	2.630	1.563	0.311	12.0

Part Numbers are specified by "TU350URW" and Bore Size. Example: TU350URW x 2-1/4.

T-Zerk: 1/4-28 Taper

For replacement inserts use B350RW Bearing Inserts.

★ Take-Up Frames shown on page M-33.

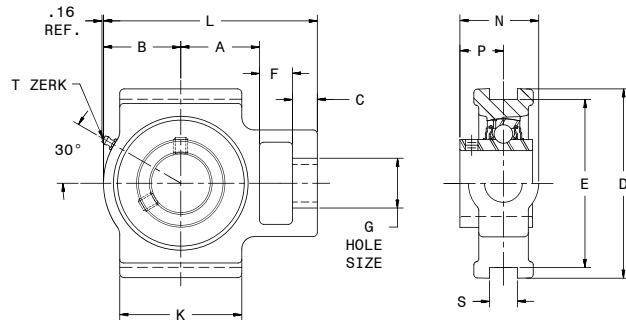
For Load Ratings, see page N-3.

Medium Duty Wide Slot Take-Up Units

Series WSTU350URW

Features

- Relube type. Prelubricated at factory
- Setscrew locking
- Self-aligning replacement bearing
- Nitrile rubber seals with steel trash guard
- Precision bored Cast Iron housing



SHAFT SIZE	USE WITH FRAME NO. ★	DIMENSIONS													WT. LBS.
		A	B	C	D	E	F	G	J	K	L	N	P	S§	
1	3 Thru 12TWS200DE	1.730	1.690	0.400	4.020	3.504	0.630	0.870	2.200	2.250	4.610	1.610	0.874	0.531	3.0
1-3/16, 1-1/4	3 Thru 12TWS200DE	1.930	2.010	0.510	4.020	3.504	0.630	0.870	2.520	2.520	5.240	1.730	1.000	0.531	3.5
1-3/8, 1-7/16	3 Thru 18TWS200FH	2.120	2.170	0.630	4.490	4.000	0.750	1.140	3.270	3.270	5.830	2.160	1.189	0.689	4.0
1-1/2	3 Thru 18TWS200FH	2.050	2.240	0.630	4.490	4.000	0.750	1.140	3.270	3.270	5.830	2.160	1.189	0.689	4.8
1-5/8, 1-3/4, 1-11/16	3 Thru 18TWS200FH	2.160	2.330	0.630	4.490	4.000	0.750	1.140	3.270	3.380	6.030	2.250	1.283	0.689	6.8
1-15/16, 2	9 Thru 18TWS200JK	2.440	2.560	0.750	5.750	5.126	0.980	1.380	4.020	3.740	6.890	2.580	1.315	1.063	9.6
2-3/16, 2-1/4	9 Thru 18TWS200JK	2.680	2.950	0.750	5.750	5.126	1.260	1.380	4.020	4.020	7.800	2.820	1.563	1.063	12.0
2-7/16, 2-1/2	---	3.310	3.420	0.830	6.570	5.945	1.260	1.620	4.370	4.760	8.980	2.940	1.563	1.063	16.0

Part Numbers are specified by "WSTU350URW" and Bore Size. Example: WSTU350URW x 2-1/4.

T-Zerk: 1/4-28 Taper

For replacement inserts use B350RW Bearing Inserts, see page M-35.

★ Take-Up Frames shown on page M-34.

For Load Ratings, see page N-3.

Dimensions shown are for reference only.

DOWNLOAD AVAILABLE CAD MODELS AT: WWW.HUBCITYINC.COM

Certified prints are available upon request

CALL: (605) 225-0360 • FAX: (605) 225-0567

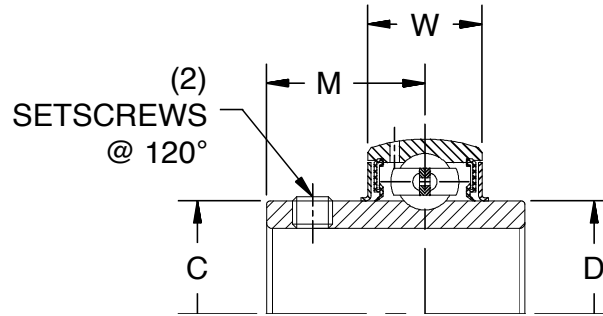
Hub City DuraLine™ Bearing Units

Bearing Inserts

Series B350RW

Features

- Spherical outside diameter
- Relube type. Prelubricated at factory
- Steel retainer
- Nitrile rubber seals with steel flingers
- Setscrew locking
- Medium duty
- Wide inner ring



SHAFT SIZE	DIMENSIONS						WT. LBS.
	C	D	M	S	W	SETSCREW	
1	1.5870	2.4409	0.8740	1.5000	0.7480	1/4 - 28 UNF	1.0
1-3/16, 1-1/4	1.8900	2.8346	1.0000	1.6890	0.7870	1/4 - 28 UNF	1.3
1-3/8, 1-7/16	2.0870	3.1496	1.1890	1.9370	0.8270	5/16 - 24 UNF	1.6
1-1/2	2.2520	3.3465	1.1890	1.9370	0.8660	5/16 - 24 UNF	1.9
1-5/8, 1-3/4, 1-11/16	2.4330	3.5433	1.2830	2.0310	0.9060	5/16 - 24 UNF	2.2
1-15/16, 2	2.7170	3.9370	1.3150	2.1890	0.9840	3/8 - 24 UNF	2.6
2-3/16, 2-1/4	2.9490	4.3307	1.5630	2.5630	1.0630	3/8 - 24 UNF	3.1
2-7/16, 2-1/2	3.4060	4.9213	1.7480	2.9370	1.1410	7/16 - 20 UNF	5.1
2-11/16	3.6020	5.1181	1.7520	3.0630	1.1810	7/16 - 20 UNF	5.6
2-15/16, 3	3.8580	5.5118	1.9410	3.2520	1.2600	7/16 - 20 UNF	6.4
3-7/16, 3-1/2	4.3700	6.2992	2.2160	3.7800	1.4570	7/16 - 20 UNF	8.5

Part Numbers are specified by "B350RW" and Bore Size. Example: B350RW x 1-1/2.

Used in PB350DRW Pillow Blocks; FB350DRW Flange Blocks; FC350URW Flange Cartridges; and TU350URW, WSTU350URW Take-Up Units.

Dimensions shown are for reference only.

Hub City DuraLine™ Bearing Units

Quick Reference Competitor Product Interchange Guide

TO USE THIS GUIDE: 1. LOCATE THE COMPETITOR'S PREFIX IN THE APPROPRIATE COLUMN. FOLLOW THE LINE LEFT TO READ THE DURALINE PREFIX LOCATED ON THE SAME LINE. 2. LOCATE THE COMPETITORS SUFFIX IN THE APPROPRIATE COLUMN. FOLLOW THE LINE LEFT TO READ THE CORRECT DURALINE SIZE. 3. COMBINE DURALINE PREFIX AND SIZE FOR PROPER ORDERING INFORMATION.

Normal Duty Pillow Blocks

	DuraLine	AMI	FYH	IPTCI	PEER	SST
PREFIX	PB220UR	KHLP	EASL	SAPL	FHLP	SAAK
	PB220DRW		NAPK	NAPL	HCLP	HCAK
	PB221URz	KHP	EAP	SAP	FHP	SAP
	PB221DRW	UGP	NAP	NAP	HCP	HCP
	PB250UR		EBSL	SBPL	FHSLP	SBAK
	PB250DRW	UCLP	SL	UCPL	UCLP	UCAK
	PB251UR		UCP	UCP	FHSP	SBP
	PB251DRW	UCP	UCP	UCP	UCP	UCP
	TPB250UR			SBPA		
	TPB250DRW	UCTB	UCPAN	UCPA	UCPA	UCPA
SIZE / SUFFIX	1/2	201-8	201-8	201-8	201-8	201-8
	5/8	202-10	202-10	202-10	202-10	202-10
	3/4	204-12	204-12	204-12	204-12	204-12
	7/8	205-14	205-14	205-14	205-14	205-14
	1	205-16	205-16	205-16	205-16	205-16
	1-1/8	206-18	206-18	206-18	206-18	206-18
	1-3/16	206-19	206-19	206-19	206-19	206-19
	1-1/4S	206-20	206-20	206-20	206-20	206-20
	1-1/4	207-20	207-20	207-20	207-20	207-20
	1-3/8	207-22	207-22	207-22	207-22	207-22
	1-7/16	207-23	207-23	207-23	207-23	207-23
	1-1/2	208-24	208-24	208-24	208-24	208-24
	1-5/8	209-26	209-26	209-26	209-26	209-26
	1-11/16	209-27	209-27	209-27	209-27	209-27
	1-3/4	209-28	209-28	209-28	209-28	209-28
	1-7/8	210-30	210-30	210-30	210-30	210-30
	1-15/16	210-31	210-31	210-31	210-31	210-31
	2S	210-32	210-32	210-32	210-32	210-32
	2	211-32	211-32	211-32	211-32	211-32
	2-3/16	211-35	211-35	211-35	211-35	211-35
2-7/16	212-39	212-39	212-39	212-39	212-39	
2-15/16	215-47	215-47	215-47	215-47	215-47	

Normal Duty Flange Blocks & Flange Brackets

	DuraLine	AMI	FYH	IPTCI	PEER	SST
PREFIX	FB220UR	KHF	EAF	SAF	FHF	SAF-S
	FB220DRW		NANF	NANF	HCFS	HCFS
	FB230UR	KHFT	EAF	SAFL	FHFT	SAFT
	FB230DRW	UGJFT	NANFL	NANFL	HCFTS	HCFT
	FB250UR		EBF	SBF	FHSF	SBF-S
	FB250DRW	UCF		UCF	UCF	UCF
	FB260UR		EBFL	SBFL	FHFST	SBFT
	FB260DRW	UCFT	UCFL	UCFL	UCFT	UCFT
	FR250URW	UCFB	UCFB	UCFB	UCFB	UCFB
	SIZE / SUFFIX	1/2	201-8	201-8	201-8	201-8
5/8		202-10	202-10	202-10	202-10	202-10
3/4		204-12	204-12	204-12	204-12	204-12
7/8		205-14	205-14	205-14	205-14	205-14
1		205-16	205-16	205-16	205-16	205-16
1-1/8		206-18	206-18	206-18	206-18	206-18
1-3/16		206-19	206-19	206-19	206-19	206-19
1-1/4S		206-20	206-20	206-20	206-20	206-20
1-1/4		207-20	207-20	207-20	207-20	207-20
1-3/8		207-22	207-22	207-22	207-22	207-22
1-7/16		207-23	207-23	207-23	207-23	207-23
1-1/2		208-24	208-24	208-24	208-24	208-24
1-5/8		209-26	209-26	209-26	209-26	209-26
1-11/16		209-27	209-27	209-27	209-27	209-27
1-3/4		209-28	209-28	209-28	209-28	209-28
1-7/8		210-30	210-30	210-30	210-30	210-30
1-15/16		210-31	210-31	210-31	210-31	210-31
2S		210-32	210-32	210-32	210-32	210-32
2		211-32	211-32	211-32	211-32	211-32
2-3/16		211-35	211-35	211-35	211-35	211-35
2-7/16	212-39	212-39	212-39	212-39	212-39	
2-15/16	215-47	215-47	215-47	215-47	215-47	

Light Duty Flange Blocks

	DuraLine	AMI	FYH	IPTCI	PEER	SST
PREFIX	FB100UR				FHFS3X	SBFCT
	FB150UR	BTM		SBRFB	FHFS3X-G	SBFCT-G
	FB110UR			SBFL-_-H4	FHSFX	SBFTD
	FB160UR	BFX	BLF	SBLF-_-GH4	FHSFX-G	SBFTD-G
SIZE / SUFFIX	1/2	201-8	201-8	201-8	201-8	201-8
	5/8	202-10	202-10	202-10	202-10	202-10
	3/4	204-12	204-12	204-12	204-12	204-12
	7/8	205-14	205-14	205-14	205-14	205-14
	1	205-16	205-16	205-16	205-16	205-16
	1-1/8	206-18	206-18	206-18	206-18	206-18
	1-3/16	206-19	206-19	206-19	206-19	206-19
	1-1/4S	206-20	206-20	206-20	206-20	206-20
	1-1/4	207-20	207-20	207-20	207-20	207-20
	1-3/8	207-22	207-22	207-22	207-22	207-22
	1-7/16	207-23	207-23	207-23	207-23	207-23

Medium Duty Pillow Blocks & Flange Blocks

	DuraLine	AMI	FYH	IPTCI	PEER	SST
PX	PB350UR	UCP	UCP	UCP	UCP	UCP
	FB350UR	UCF	UCF	UCF	UCF	UCF
SIZE / SUFFIX	1	X05-16	X05-16	X05-16	X05-16	X05-16
	1-7/16	X07-23	X07-23	X07-23	X07-23	X07-23
	1-1/2	X08-24	X08-24	X08-24	X08-24	X08-24
	1-3/4	X09-28	X09-28	X09-28	X09-28	X09-28
	1-15/16	X10-31	X10-31	X10-31	X10-31	X10-31
	2	X11-32		X11-32	X11-32	X11-32
	2-3/16	X11-35	X11-35	X11-35	X11-35	X11-35
	2-7/16	X12-39	X12-39	X12-39	X12-39	X12-39
	2-1/2	X13-40	X13-40	X13-40	X13-40	X13-40
	2-11/16	X14-43	X14-43	X14-43	X14-43	X14-43
	2-15/16	X15-47	X15-47	X15-47	X15-47	X15-47
	3	X15-48	X15-48	X15-48	X15-48	X15-48
	3-7/16	X17-55	X17-55	X17-55	X17-55	X17-55
	3-1/2	X18-56	X18-56	X18-56	X18-56	X18-56

NOTE: ABOVE GUIDE IS DESIGNED FOR QUICK REFERENCE ONLY. PLEASE REVIEW AND CONFIRM ALL CRITICAL DIMENSIONS BEFORE PLACING YOUR ORDER. NOT ALL CONFIGURATIONS ARE AVAILABLE IN EACH SIZE LISTED. CONFIRM AVAILABILITY IN CATALOG DIMENSIONAL PAGES.

DURALINE NOMENCLATURE GUIDE:

PB: PILLOW BLOCK
 FB: FLANGE BLOCK
 FR: FLANGE CARTRIDGE
 100 SERIES: LIGHT DUTY SETSCREW LOCK
 220: SERIES NORMAL DUTY ECCENTRIC LOCK

221 SERIES: NORMAL DUTY ECCENTRIC LOCK-HIGH BASE
 230 SERIES: NORMAL DUTY ECCENTRIC LOCK-2 BOLT FLANGE
 250 SERIES: NORMAL DUTY SETSCREW LOCK
 251 SERIES: NORMAL DUTY SETSCREW LOCK-HIGH BASE
 260 SERIES: NORMAL DUTY SETSCREW LOCK-2 BOLT FLANGE

350 SERIES: MEDIUM DUTY SETSCREW LOCK
 UR: CAST IRON DURALINE HOUSING (100 SERIES IS DUCTILE)
 DR: DUCTILE IRON DURALINE HOUSING
 W: WIDE INNER RACE